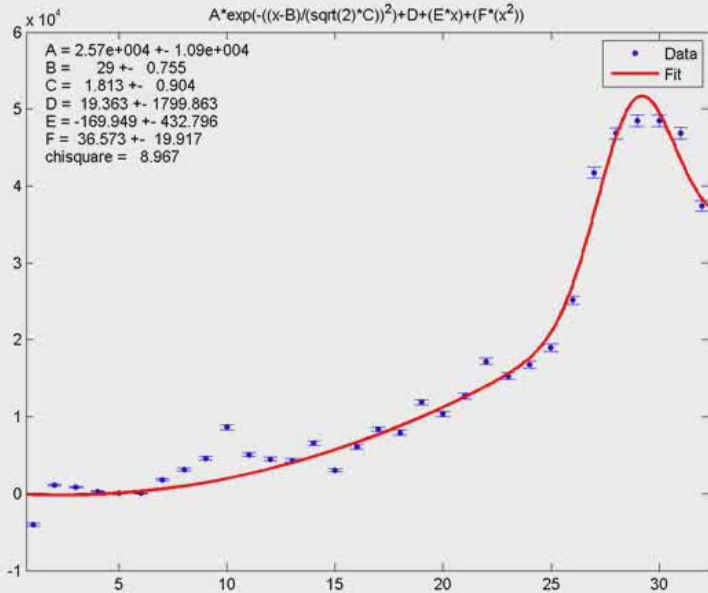


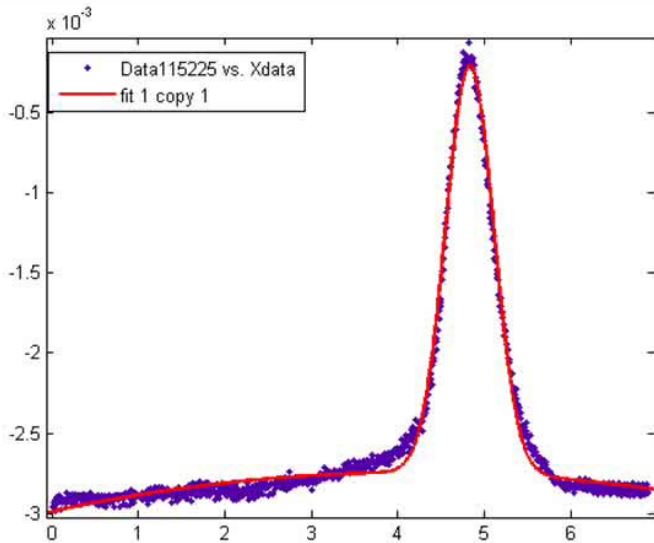
e+ PMT calibration

e+ displaced vertically on the PMT using a vertical bump centered at 23W. Bump was varied from 0 to +550cu in 50 cu steps.

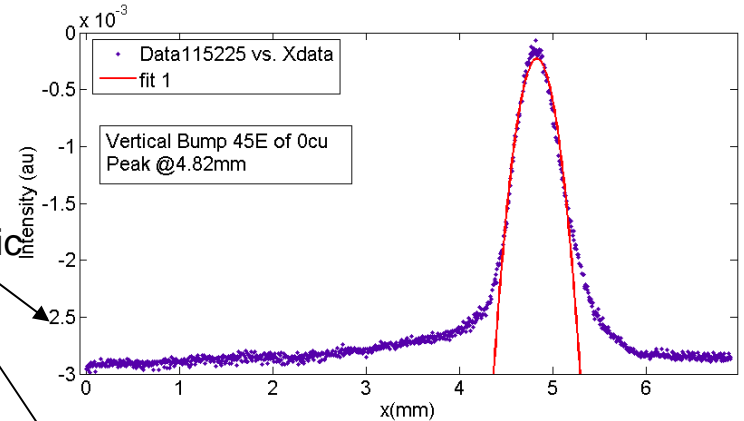
At each bump setting a correlation of the position of the image on the PMT and CCD was made.



Movie of PMT image at each bump setting from 0 to 550cu. **Note: Saturation of the e+ PMT distributions occurred during these measurements.**

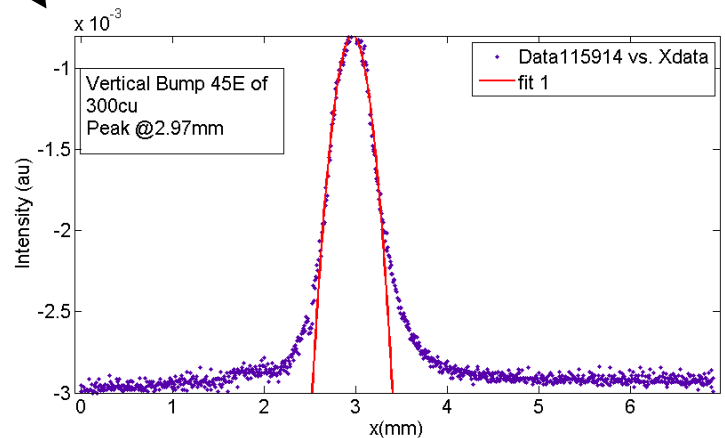


Quadratic fits

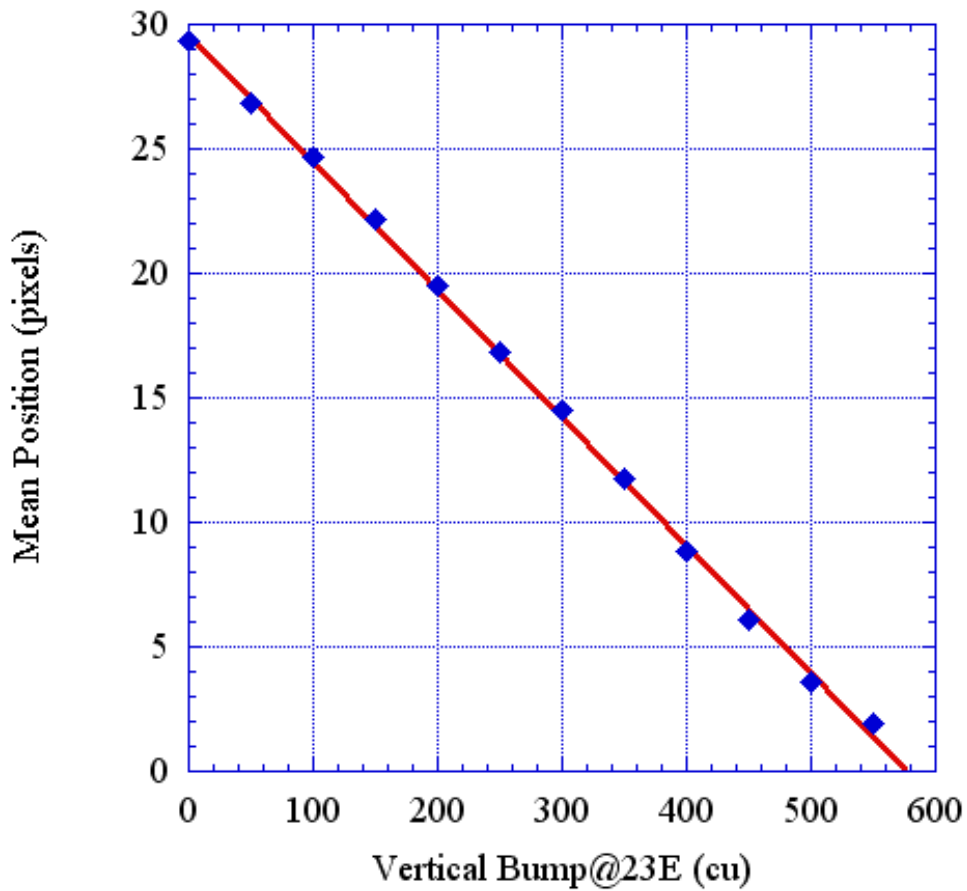


CCD Camera Image fit to either a quadratic or Gaussian distribution to determine the mean position of the bump.

Movie: Gaussian fit

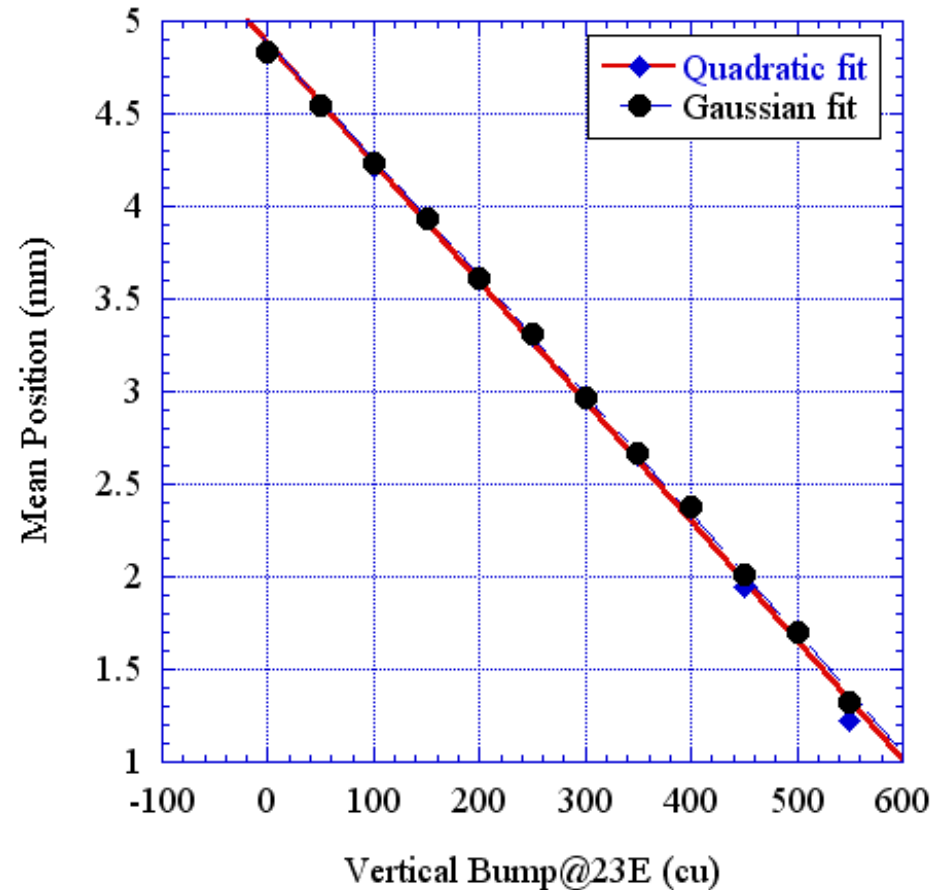


e+ PMT Calibration 12/19/2007

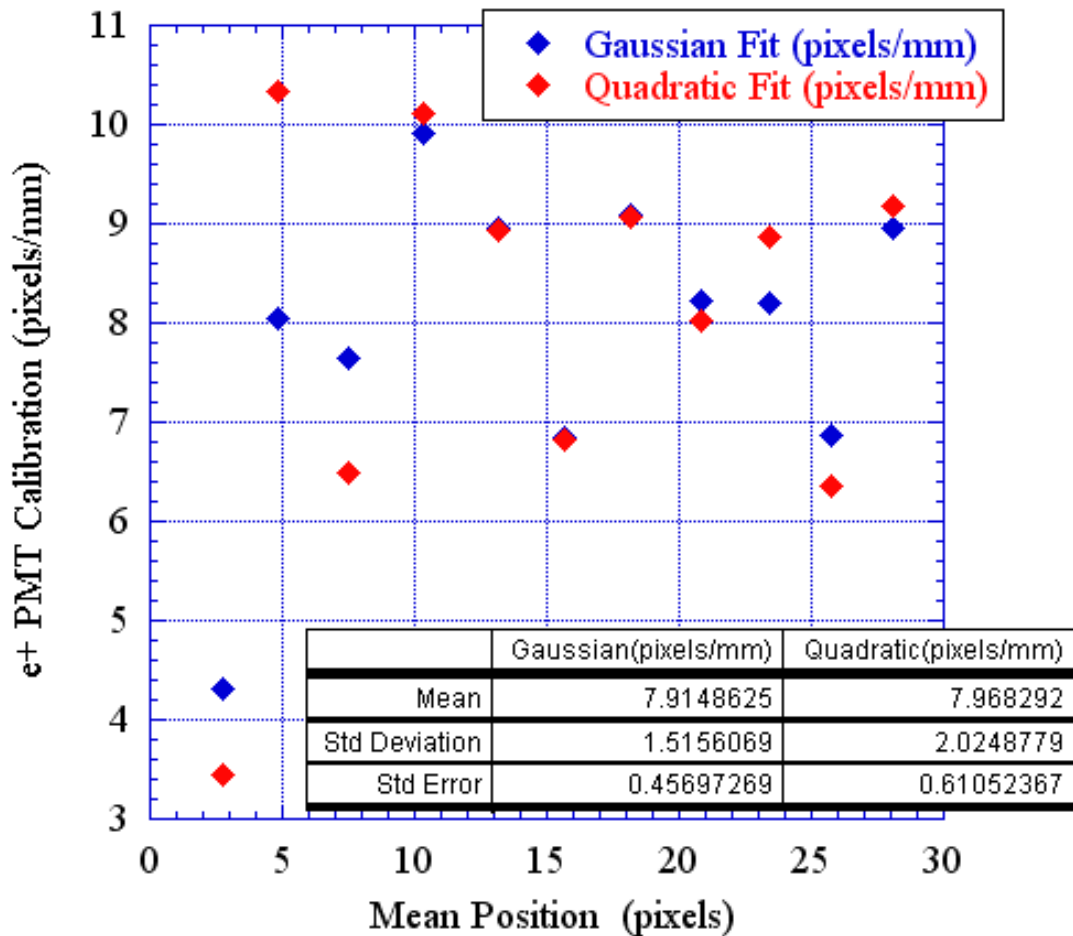


PMT and CCD position change for 23w vertical bump amplitude.

e+ CCD Calibration 12/19/2007



e+ PMT Calibration 12/19/2007



e+ PMT calibration

- Past calibration was 10.4 pixels/mm.
- Calibration with saturated PMT signal is 7.9+/-0.5 pixels/mm.