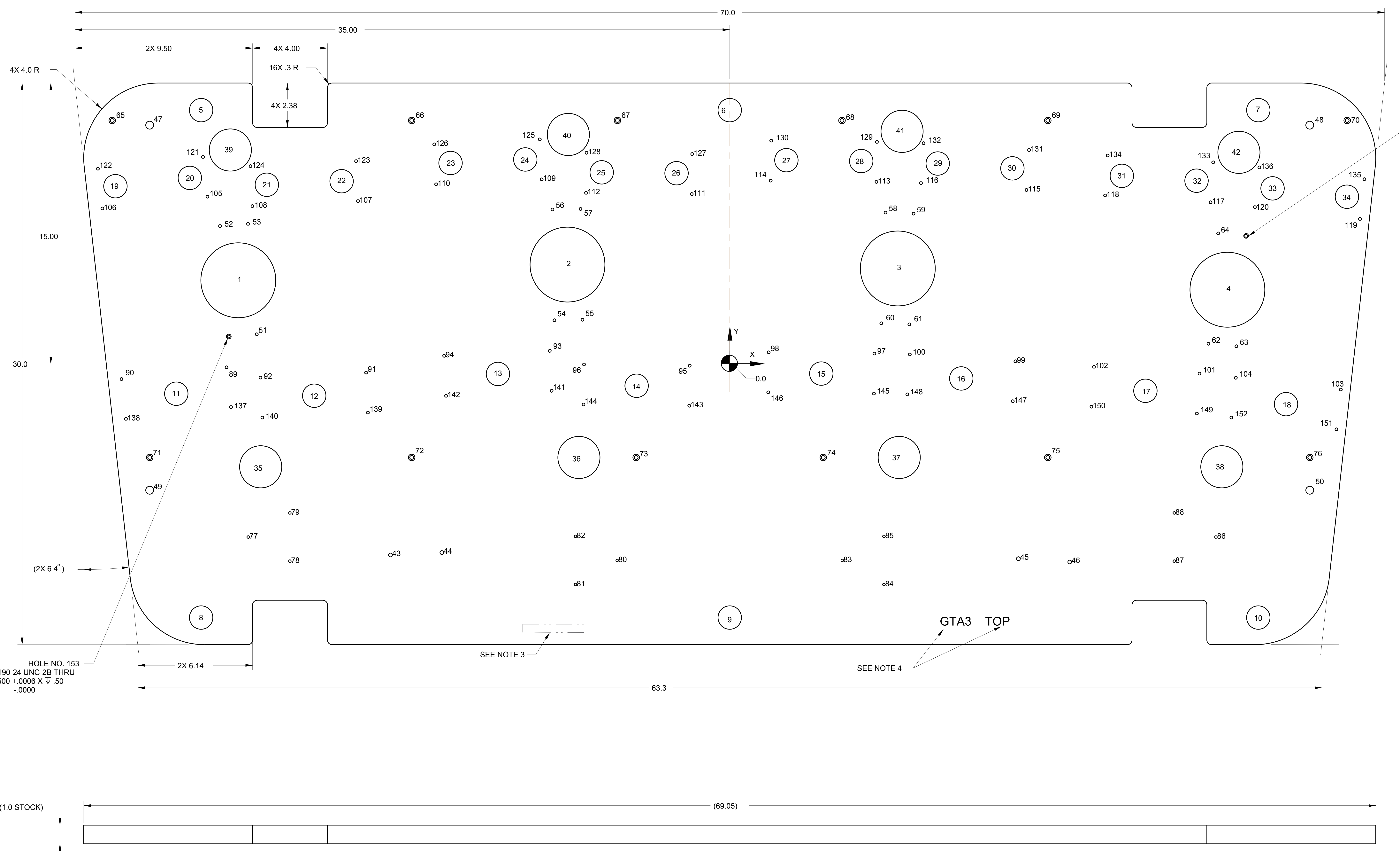


- NOTES:
1. MATERIAL: PLATE 1.0 THK. ALUMINUM TYPE 6061-T6 PER ASTM B209
 2. MAKE FROM DXF FILE
 3. VIBRO-ETCH PART WITH DRAWING NUMBER WITH MIN .25 HIGH CHARACTERS IN ACCORDANCE WITH MIL-STD-130, LOCATE APPROX AS SHOWN.
 4. VIBRO-ETCH PLATE WITH PART NAME AND SIDE DESIGNATION WITH MIN .25 HIGH CHARACTERS. LOCATE APPROX AS SHOWN.

REVISION APPROVALS									
REV	ECN NO.	DESCRIPTION	DATE	BY	CHK	DES	ENG	SUPV	
A	-	INITIAL RELEASE	-	-	-	-	-	-	-



HOLE NO. 154
 .190-24 UNC-2B THRU
 ø2500 +.0006 X .50
 -.0000

HOLE NO. 153
 .190-24 UNC-2B THRU
 ø2500 +.0006 X .50
 -.0000

GTA3 TOP

SEE NOTE 3

SEE NOTE 4

REV	DESCRIPTION
A	INITIAL RELEASE

INTERPRET IN GENERAL ACCORDANCE WITH ASME Y14.5				COLLIDER-ACCELERATOR DEPARTMENT BROOKHAVEN NATIONAL LABORATORY UPTON, N.Y. 11973	
UNLESS OTHERWISE SPECIFIED DIMENSIONS ARE IN INCHES DECIMAL TOLERANCES .005 .015 .030 .050 .100 .150 .250 .500 .750 1.000 ANGULAR TOLERANCE ±1°		DRAWN BY: TRABOCCHI/GRU 3/2018 CHECKED BY: S. RESTMEYER 5/2018 DESIGN APPROVAL: A. ARNO 5/2018 DIMENSION APPROVAL: S. TRABOCCHI 4/2018 JEREMY/CHK: G. MAHLER 5/2018 DESIGNED BY: J. TUOZZOLO 5/2018		CBETA TOP PLATE ASSEMBLY, GTA3 PLATE, GTA3	
USED ON DRAWING NO. 2570M0020 APPLICATION:	QTY. PER ASSY. 1	FINISH: 125 BREAK SHARP EDGES: <input checked="" type="checkbox"/> MAX. GRIN: 015	SIZE: E CATEGORY: A3	DRAWING NUMBER: 2570M0019 SCALE: 1/2 WEIGHT: 181.5 SHEET OF 1 2	REV. A CREO

DWG NO 2570M0019

SHT 1 of 1

REV. A

HOLE TABLE			
HOLE NO.	X	Y	NOTE
1	-26.26	4.46	Ø 4.00 THRU
2	-8.67	5.30	Ø 4.00 THRU
3	8.98	5.10	Ø 4.00 THRU
4	26.60	3.96	Ø 4.00 THRU
5	-28.25	13.55	Ø 1.25 THRU
6	0.00	13.55	Ø 1.25 THRU
7	28.25	13.55	Ø 1.25 THRU
8	-28.25	-13.55	Ø 1.25 THRU
9	0.00	-13.55	Ø 1.25 THRU
10	28.25	-13.55	Ø 1.25 THRU
11	-29.58	-1.59	Ø 1.25 THRU
12	-22.21	-1.70	Ø 1.25 THRU
13	-12.39	-0.54	Ø 1.25 THRU
14	-4.98	-1.17	Ø 1.25 THRU
15	4.89	-0.52	Ø 1.25 THRU
16	12.38	-0.78	Ø 1.25 THRU
17	22.22	-1.44	Ø 1.25 THRU
18	29.73	-2.15	Ø 1.25 THRU
19	-32.83	9.49	Ø 1.25 THRU
20	-28.86	9.93	Ø 1.25 THRU
21	-24.74	9.57	Ø 1.25 THRU
22	-20.74	9.75	Ø 1.25 THRU
23	-14.92	10.73	Ø 1.25 THRU
24	-10.93	10.92	Ø 1.25 THRU
25	-6.84	10.23	Ø 1.25 THRU
26	-2.84	10.18	Ø 1.25 THRU
27	3.03	10.88	Ø 1.25 THRU
28	7.03	10.83	Ø 1.25 THRU
29	11.12	10.70	Ø 1.25 THRU
30	15.11	10.44	Ø 1.25 THRU
31	20.96	10.04	Ø 1.25 THRU
32	24.95	9.78	Ø 1.25 THRU
33	29.01	9.37	Ø 1.25 THRU
34	32.99	8.93	Ø 1.25 THRU
35	-25.07	-5.50	Ø 2.25 THRU
36	-8.06	-5.00	Ø 2.25 THRU
37	9.06	-5.00	Ø 2.25 THRU
38	26.30	-5.50	Ø 2.25 THRU
39	-26.69	11.42	Ø 2.25 THRU
40	-8.62	12.25	Ø 2.25 THRU
41	9.21	12.42	Ø 2.25 THRU
42	27.22	11.30	Ø 2.25 THRU
43	-18.13	-10.21	.250-20 UNC-2B ∇ .75
44	-15.39	-10.08	.250-20 UNC-2B ∇ .75
45	15.43	-10.41	.250-20 UNC-2B ∇ .75
46	18.17	-10.58	.250-20 UNC-2B ∇ .75
47	-31.00	12.75	.500-13 UNC-2B THRU
48	31.00	12.75	.500-13 UNC-2B THRU
49	-31.00	-6.75	.500-13 UNC-2B THRU
50	31.00	-6.75	.500-13 UNC-2B THRU
51	-25.28	1.58	Ø .1495 THRU, .190-24 UNC-2B X .75 FULL THD. MIN.
52	-27.24	7.36	Ø .1495 THRU, .190-24 UNC-2B X .75 FULL THD. MIN.
53	-25.74	7.48	Ø .1495 THRU, .190-24 UNC-2B X .75 FULL THD. MIN.
54	-9.37	2.33	Ø .1495 THRU, .190-24 UNC-2B X .75 FULL THD. MIN.
55	-7.87	2.36	Ø .1495 THRU, .190-24 UNC-2B X .75 FULL THD. MIN.
56	-9.47	8.25	Ø .1495 THRU, .190-24 UNC-2B X .75 FULL THD. MIN.
57	-7.97	8.27	Ø .1495 THRU, .190-24 UNC-2B X .75 FULL THD. MIN.
58	8.33	8.08	Ø .1495 THRU, .190-24 UNC-2B X .75 FULL THD. MIN.
59	9.83	8.02	Ø .1495 THRU, .190-24 UNC-2B X .75 FULL THD. MIN.
60	8.10	2.17	Ø .1495 THRU, .190-24 UNC-2B X .75 FULL THD. MIN.
61	9.60	2.11	Ø .1495 THRU, .190-24 UNC-2B X .75 FULL THD. MIN.
62	25.58	1.07	Ø .1495 THRU, .190-24 UNC-2B X .75 FULL THD. MIN.
63	27.08	0.94	Ø .1495 THRU, .190-24 UNC-2B X .75 FULL THD. MIN.
64	26.10	6.97	Ø .1495 THRU, .190-24 UNC-2B X .75 FULL THD. MIN.
65	-33.00	13.00	Ø .203 ∇ .19, ∇ Ø .350 X 120°
66	-17.00	13.00	Ø .203 ∇ .19, ∇ Ø .350 X 120°
67	-6.00	13.00	Ø .203 ∇ .19, ∇ Ø .350 X 120°
68	6.00	13.00	Ø .203 ∇ .19, ∇ Ø .350 X 120°
69	17.00	13.00	Ø .203 ∇ .19, ∇ Ø .350 X 120°
70	33.00	13.00	Ø .203 ∇ .19, ∇ Ø .350 X 120°

HOLE TABLE			
HOLE NO.	X	Y	NOTE
71	-31.00	-5.00	Ø .203 ∇ .19, ∇ Ø .350 X 120°
72	-17.00	-5.00	Ø .203 ∇ .19, ∇ Ø .350 X 120°
73	-5.00	-5.00	Ø .203 ∇ .19, ∇ Ø .350 X 120°
74	5.00	-5.00	Ø .203 ∇ .19, ∇ Ø .350 X 120°
75	17.00	-5.00	Ø .203 ∇ .19, ∇ Ø .350 X 120°
76	31.00	-5.00	Ø .203 ∇ .19, ∇ Ø .350 X 120°
77	-25.74	-9.25	.164-32 UNC-2B ∇ .50
78	-23.51	-10.54	.164-32 UNC-2B ∇ .50
79	-23.51	-7.96	.164-32 UNC-2B ∇ .50
80	-6.02	-10.50	.164-32 UNC-2B ∇ .50
81	-8.24	-11.79	.164-32 UNC-2B ∇ .50
82	-8.24	-9.21	.164-32 UNC-2B ∇ .50
83	6.02	-10.50	.164-32 UNC-2B ∇ .50
84	8.24	-11.79	.164-32 UNC-2B ∇ .50
85	8.24	-9.21	.164-32 UNC-2B ∇ .50
86	25.99	-9.25	.164-32 UNC-2B ∇ .50
87	23.76	-10.54	.164-32 UNC-2B ∇ .50
88	23.76	-7.96	.164-32 UNC-2B ∇ .50
89	-26.89	-0.18	Ø .1495 THRU, .190-24 UNC-2B X .75 FULL THD. MIN.
90	-32.51	-0.81	Ø .1495 THRU, .190-24 UNC-2B X .75 FULL THD. MIN.
91	-19.44	-0.47	Ø .1495 THRU, .190-24 UNC-2B X .75 FULL THD. MIN.
92	-25.08	-0.73	Ø .1495 THRU, .190-24 UNC-2B X .75 FULL THD. MIN.
93	-9.62	0.70	Ø .1495 THRU, .190-24 UNC-2B X .75 FULL THD. MIN.
94	-15.26	0.43	Ø .1495 THRU, .190-24 UNC-2B X .75 FULL THD. MIN.
95	-2.14	-0.10	Ø .1495 THRU, .190-24 UNC-2B X .75 FULL THD. MIN.
96	-7.79	-0.03	Ø .1495 THRU, .190-24 UNC-2B X .75 FULL THD. MIN.
97	7.73	0.55	Ø .1495 THRU, .190-24 UNC-2B X .75 FULL THD. MIN.
98	2.08	0.62	Ø .1495 THRU, .190-24 UNC-2B X .75 FULL THD. MIN.
99	15.27	0.14	Ø .1495 THRU, .190-24 UNC-2B X .75 FULL THD. MIN.
100	9.63	0.50	Ø .1495 THRU, .190-24 UNC-2B X .75 FULL THD. MIN.
101	25.11	-0.52	Ø .1495 THRU, .190-24 UNC-2B X .75 FULL THD. MIN.
102	19.47	-0.15	Ø .1495 THRU, .190-24 UNC-2B X .75 FULL THD. MIN.
103	32.66	-1.37	Ø .1495 THRU, .190-24 UNC-2B X .75 FULL THD. MIN.
104	27.05	-0.74	Ø .1495 THRU, .190-24 UNC-2B X .75 FULL THD. MIN.
105	-27.91	8.93	Ø .1495 THRU, .190-24 UNC-2B X .75 FULL THD. MIN.
106	-33.53	8.30	Ø .1495 THRU, .190-24 UNC-2B X .75 FULL THD. MIN.
107	-19.87	8.69	Ø .1495 THRU, .190-24 UNC-2B X .75 FULL THD. MIN.
108	-25.51	8.43	Ø .1495 THRU, .190-24 UNC-2B X .75 FULL THD. MIN.
109	-10.05	9.86	Ø .1495 THRU, .190-24 UNC-2B X .75 FULL THD. MIN.
110	-15.69	9.59	Ø .1495 THRU, .190-24 UNC-2B X .75 FULL THD. MIN.
111	-2.03	9.07	Ø .1495 THRU, .190-24 UNC-2B X .75 FULL THD. MIN.
112	-7.68	9.14	Ø .1495 THRU, .190-24 UNC-2B X .75 FULL THD. MIN.
113	7.84	9.72	Ø .1495 THRU, .190-24 UNC-2B X .75 FULL THD. MIN.
114	2.19	9.79	Ø .1495 THRU, .190-24 UNC-2B X .75 FULL THD. MIN.
115	15.86	9.29	Ø .1495 THRU, .190-24 UNC-2B X .75 FULL THD. MIN.
116	10.22	9.65	Ø .1495 THRU, .190-24 UNC-2B X .75 FULL THD. MIN.
117	25.70	8.63	Ø .1495 THRU, .190-24 UNC-2B X .75 FULL THD. MIN.
118	20.06	9.00	Ø .1495 THRU, .190-24 UNC-2B X .75 FULL THD. MIN.
119	33.68	7.74	Ø .1495 THRU, .190-24 UNC-2B X .75 FULL THD. MIN.
120	28.07	8.37	Ø .1495 THRU, .190-24 UNC-2B X .75 FULL THD. MIN.
121	-28.15	11.05	Ø .1495 THRU, .190-24 UNC-2B X .75 FULL THD. MIN.
122	-33.77	10.42	Ø .1495 THRU, .190-24 UNC-2B X .75 FULL THD. MIN.
123	-19.97	10.83	Ø .1495 THRU, .190-24 UNC-2B X .75 FULL THD. MIN.
124	-25.61	10.56	Ø .1495 THRU, .190-24 UNC-2B X .75 FULL THD. MIN.
125	-10.15	11.99	Ø .1495 THRU, .190-24 UNC-2B X .75 FULL THD. MIN.
126	-15.79	11.72	Ø .1495 THRU, .190-24 UNC-2B X .75 FULL THD. MIN.
127	-2.00	11.21	Ø .1495 THRU, .190-24 UNC-2B X .75 FULL THD. MIN.
128	-7.65	11.27	Ø .1495 THRU, .190-24 UNC-2B X .75 FULL THD. MIN.
129	7.87	11.86	Ø .1495 THRU, .190-24 UNC-2B X .75 FULL THD. MIN.
130	2.22	11.92	Ø .1495 THRU, .190-24 UNC-2B X .75 FULL THD. MIN.
131	16.00	11.42	Ø .1495 THRU, .190-24 UNC-2B X .75 FULL THD. MIN.
132	10.36	11.79	Ø .1495 THRU, .190-24 UNC-2B X .75 FULL THD. MIN.
133	25.84	10.76	Ø .1495 THRU, .190-24 UNC-2B X .75 FULL THD. MIN.
134	20.20	11.13	Ø .1495 THRU, .190-24 UNC-2B X .75 FULL THD. MIN.
135	33.92	9.86	Ø .1495 THRU, .190-24 UNC-2B X .75 FULL THD. MIN.
136	28.31	10.49	Ø .1495 THRU, .190-24 UNC-2B X .75 FULL THD. MIN.
137	-26.65	-2.31	Ø .1495 THRU, .190-24 UNC-2B X .75 FULL THD. MIN.
138	-32.27	-2.94	Ø .1495 THRU, .190-24 UNC-2B X .75 FULL THD. MIN.
139	-19.34	-2.60	Ø .1495 THRU, .190-24 UNC-2B X .75 FULL THD. MIN.
140	-24.98	-2.87	Ø .1495 THRU, .190-24 UNC-2B X .75 FULL THD. MIN.

HOLE TABLE			
HOLE NO.	X	Y	NOTE
141	-9.52	-1.44	Ø .1495 THRU, .190-24 UNC-2B X .75 FULL THD. MIN.
142	-15.16	-1.71	Ø .1495 THRU, .190-24 UNC-2B X .75 FULL THD. MIN.
143	-2.16	-2.24	Ø .1495 THRU, .190-24 UNC-2B X .75 FULL THD. MIN.
144	-7.81	-2.17	Ø .1495 THRU, .190-24 UNC-2B X .75 FULL THD. MIN.
145	7.71	-1.59	Ø .1495 THRU, .190-24 UNC-2B X .75 FULL THD. MIN.
146	2.06	-1.52	Ø .1495 THRU, .190-24 UNC-2B X .75 FULL THD. MIN.
147	15.13	-2.00	Ø .1495 THRU, .190-24 UNC-2B X .75 FULL THD. MIN.
148	9.49	-1.63	Ø .1495 THRU, .190-24 UNC-2B X .75 FULL THD. MIN.
149	24.97	-2.65	Ø .1495 THRU, .190-24 UNC-2B X .75 FULL THD. MIN.
150	19.33	-2.29	Ø .1495 THRU, .190-24 UNC-2B X .75 FULL THD. MIN.
151	32.42	-3.50	Ø .1495 THRU, .190-24 UNC-2B X .75 FULL THD. MIN.
152	26.81	-2.87	Ø .1495 THRU, .190-24 UNC-2B X .75 FULL THD. MIN.
153	-26.771±.002	1.461±.002	SEE F/D ZONE C8
154	27.599±.002	6.836±.002	SEE F/D ZONE F1