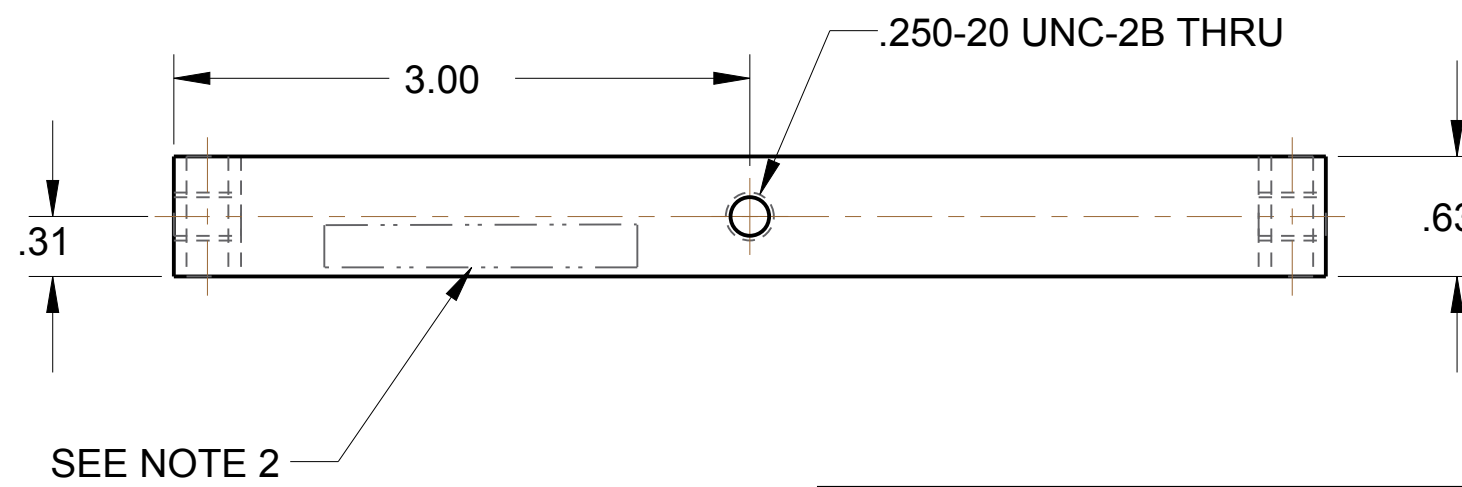
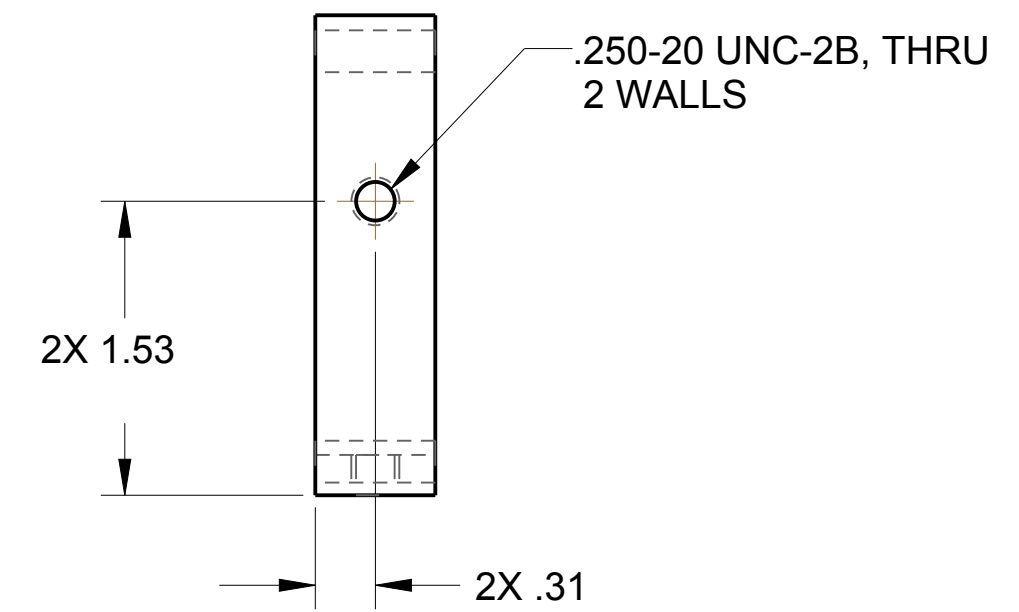
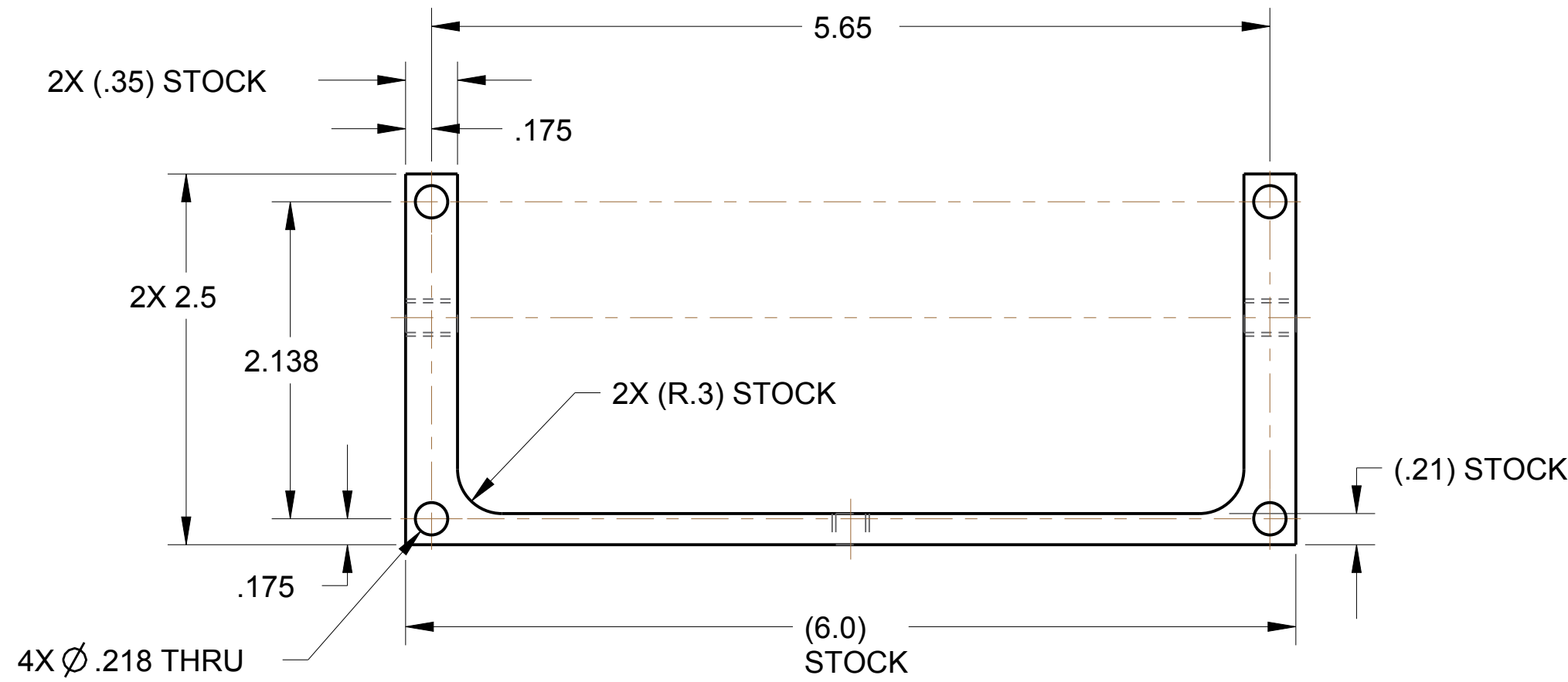


NOTES:

1. MATERIAL: CHANNEL ALUMINUM CS6 X 4.03 TYPE 6061-T6 PER ASTM B308
2. VIBRO-ETCH PART WITH DRAWING NUMBER WITH MIN .12 HIGH CHARACTERS IN ACCORDANCE WITH MIL-STD-130, LOCATE APPROX AS SHOWN.

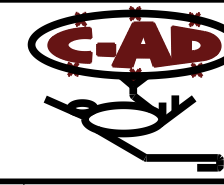
REVISION APPROVALS								
REV	ECN NO.	DESCRIPTION	DATE	BY	CHK	DES	ENG	SUPV
A	-	INITIAL RELEASE	-	-	-	-	-	-



2570M0056	16	2570M0035	16
2570M0053	16	2570M0032	16
2570M0050	16	2570M0029	16
2570M0047	16	2570M0026	16
2570M0044	16	2570M0023	16
2570M0041	16	2570M0020	16
2570M0038	16	2570M0017	16
		2570M0014	16
		2570M0010	16

USED ON DRAWING NO.	QTY. PER ASSY.	FINISH	BREAK SHARP EDGES
	125	✓	MAX. .001 IN. 015
APPLICATION			

INTERPRET IN GENERAL ACCORDANCE WITH ASME Y14.5



COLLIDER-ACCELERATOR DEPARTMENT  
BROOKHAVEN NATIONAL LABORATORY  
UPTON, N.Y. 11973

DRAWN BY	S.TRABOCCHI	04/18/17
CHECKED BY	S.RESTMAYER	3/19/18
DESIGN APPROVAL	A.ARNO	3/20/18
ENG / PHY APPROVAL	G.MAHLER	3/20/18
SUPERVISOR APPROVAL	J.TUOZZOLO	3/20/18
CEE / CME		
DIVISION HEAD		
Q.A.		
SAFETY / RSC		
DEPARTMENT CHAIR		

CBETA  
TOP PLATE ASSEMBLY  
CHANNEL, MAGNET ALIGNMENT

SIZE	DRAWING NUMBER:	REV.
C	2570M0065	A
Q.A. CATEGORY	A3	SCALE: 1/1
WEIGHT: 0.2	SHEET OF 1	1

DWG NO 2570M0065 SHIT 1 OF 1 REV A

A

CREO