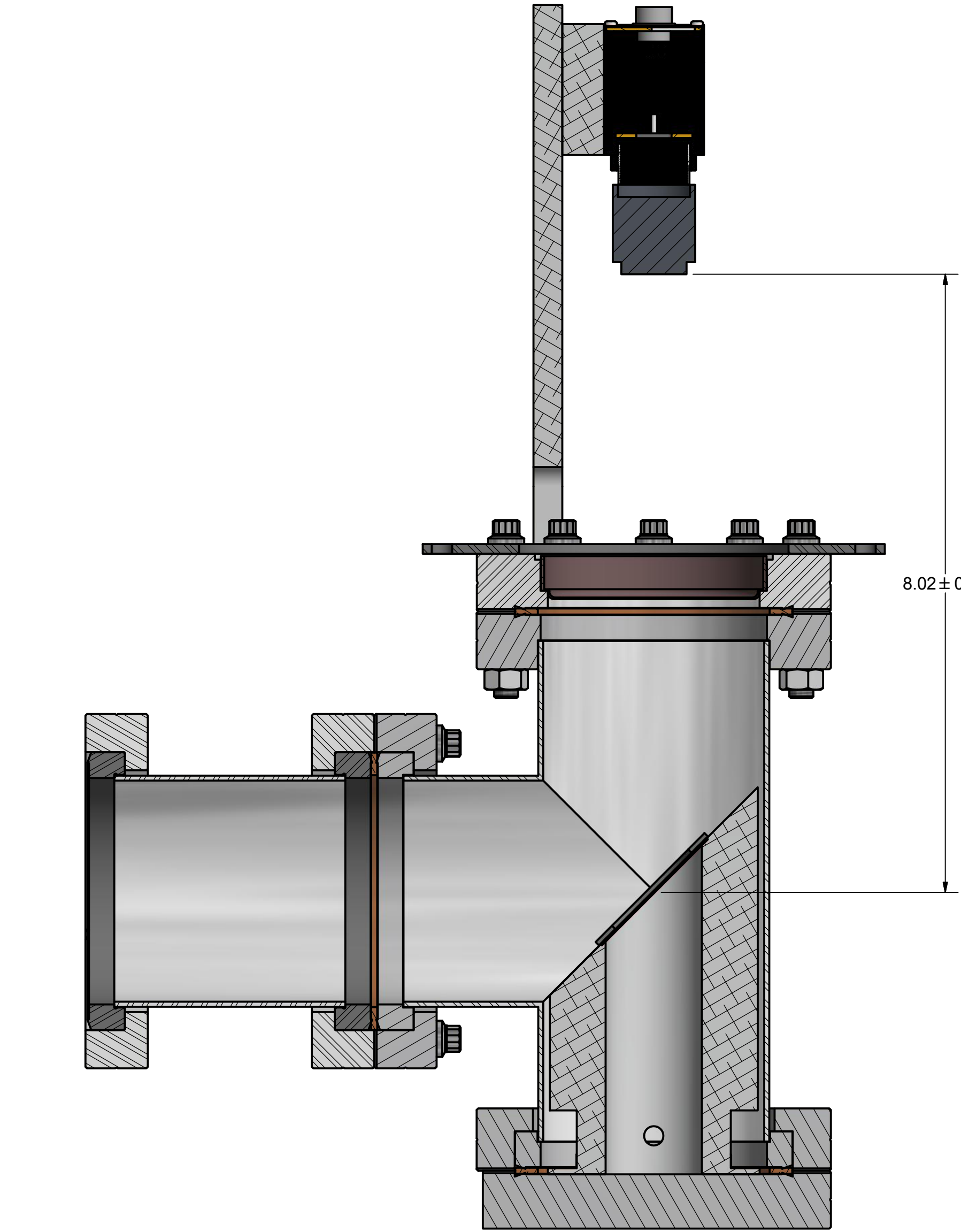
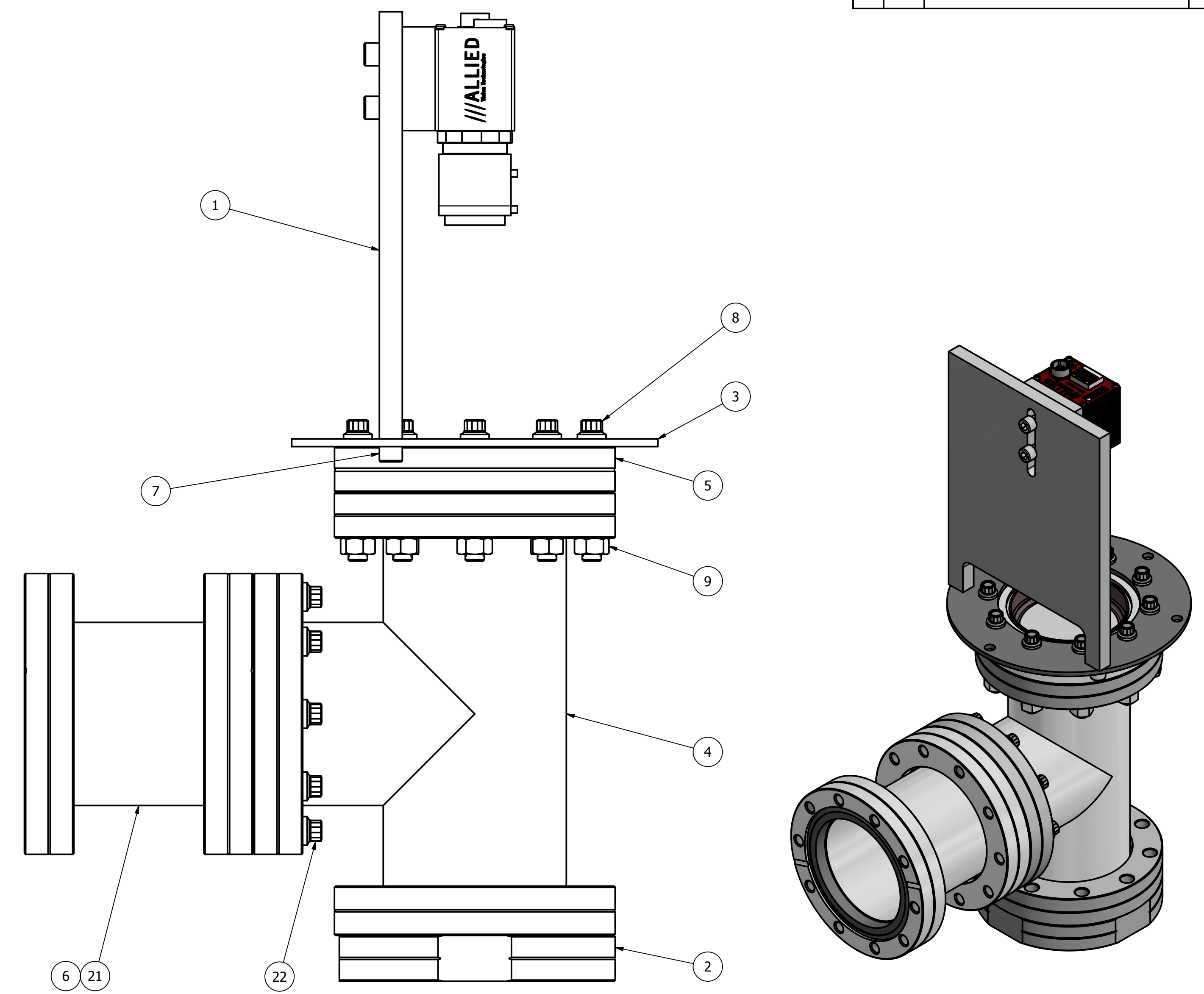
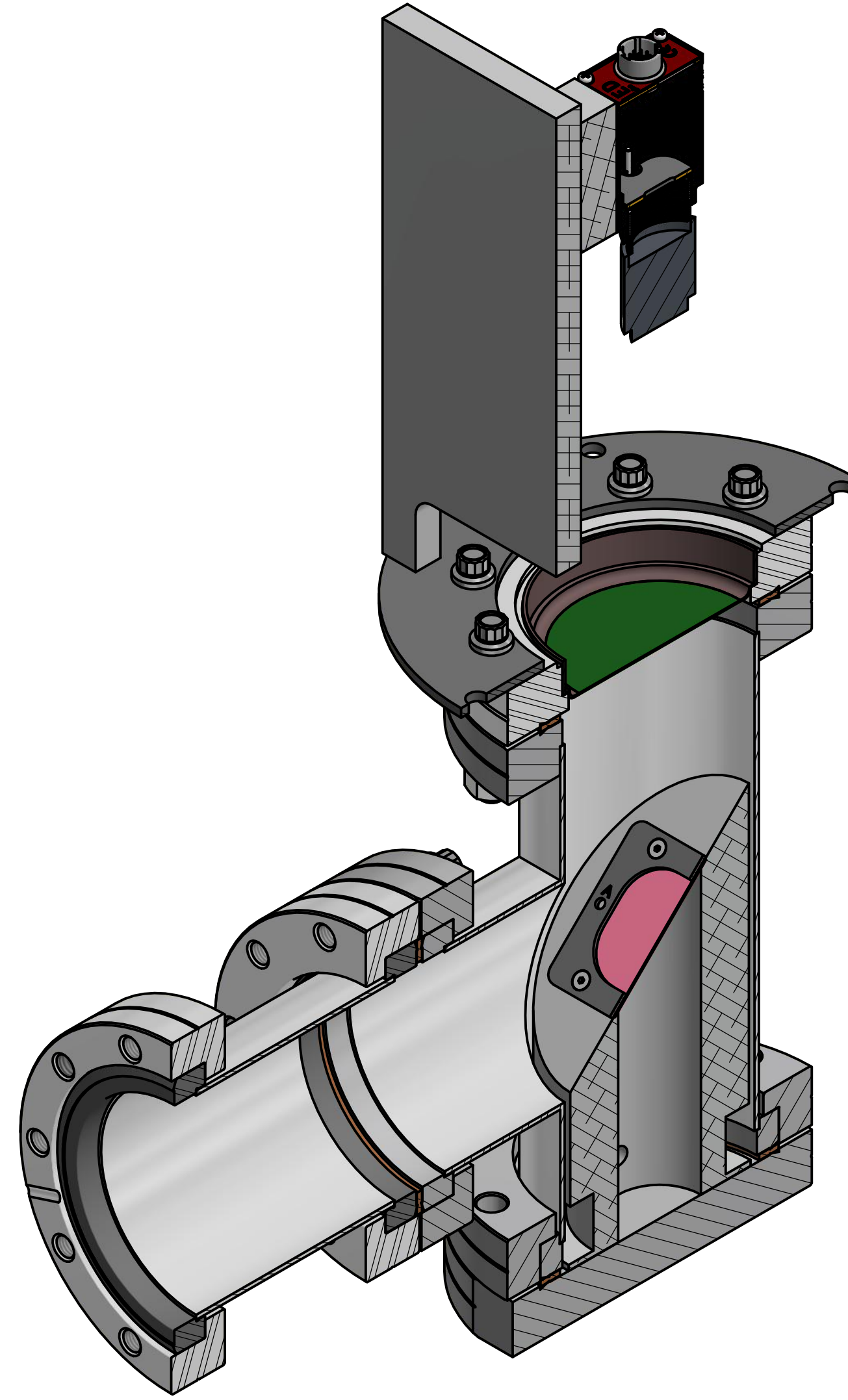
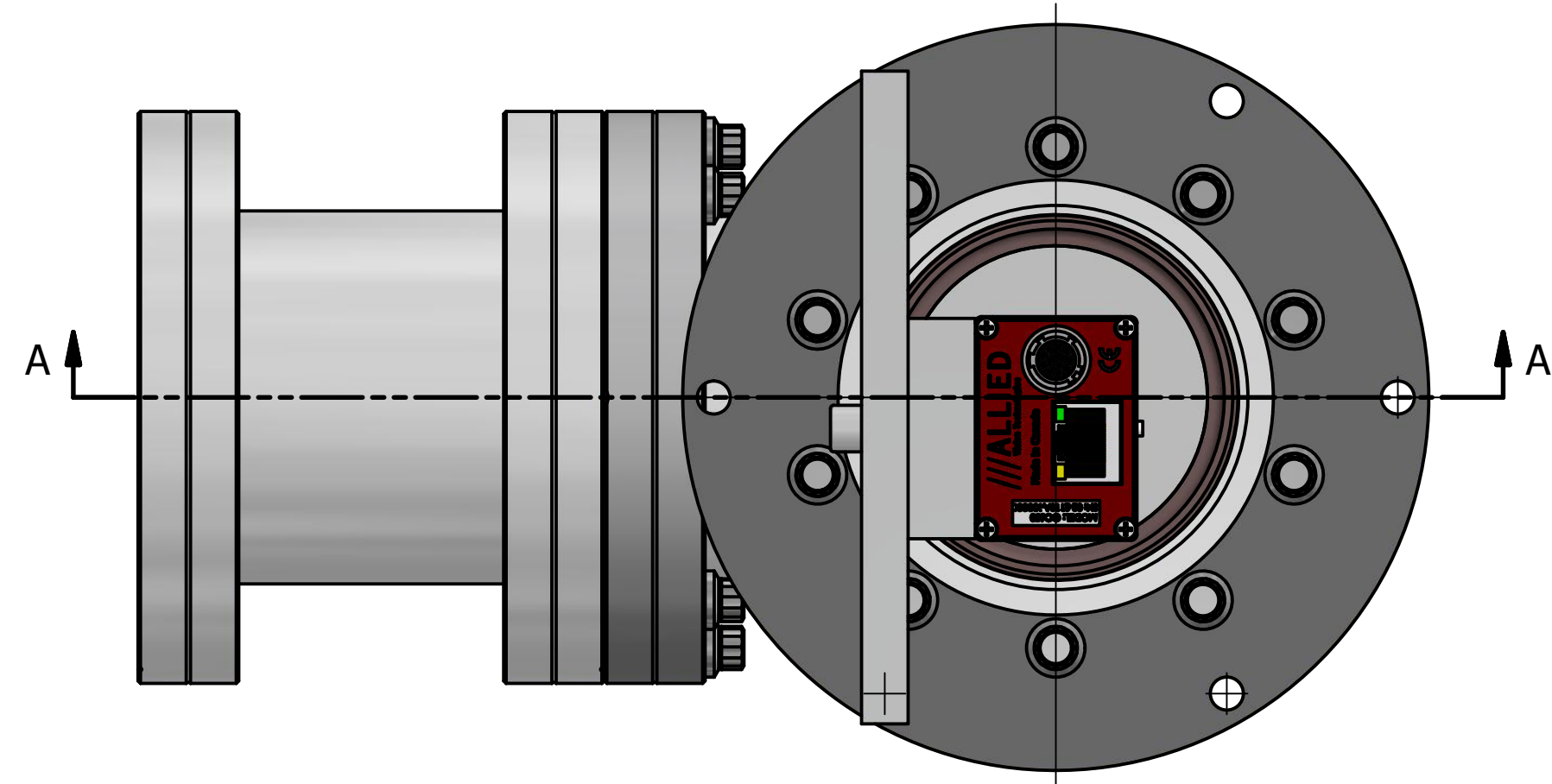
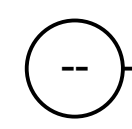
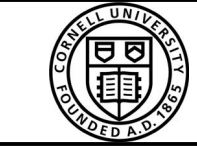


REVISIONS				
SYM	ZONE	DESCRIPTION	DATE	APP
		Initial Release	1/22/18	SWH
A		Added Custom Nipple, Gasket, & Hardware (SWH)	2/14/18	YL



 Stationary Viewer For FAT Assembly
 FILE NAME: 7208-302
 SHEET NO.: 1
 DFT. SCALE: 1.5
 MATERIAL: As Noted
 QTY: 1
 NOTES:

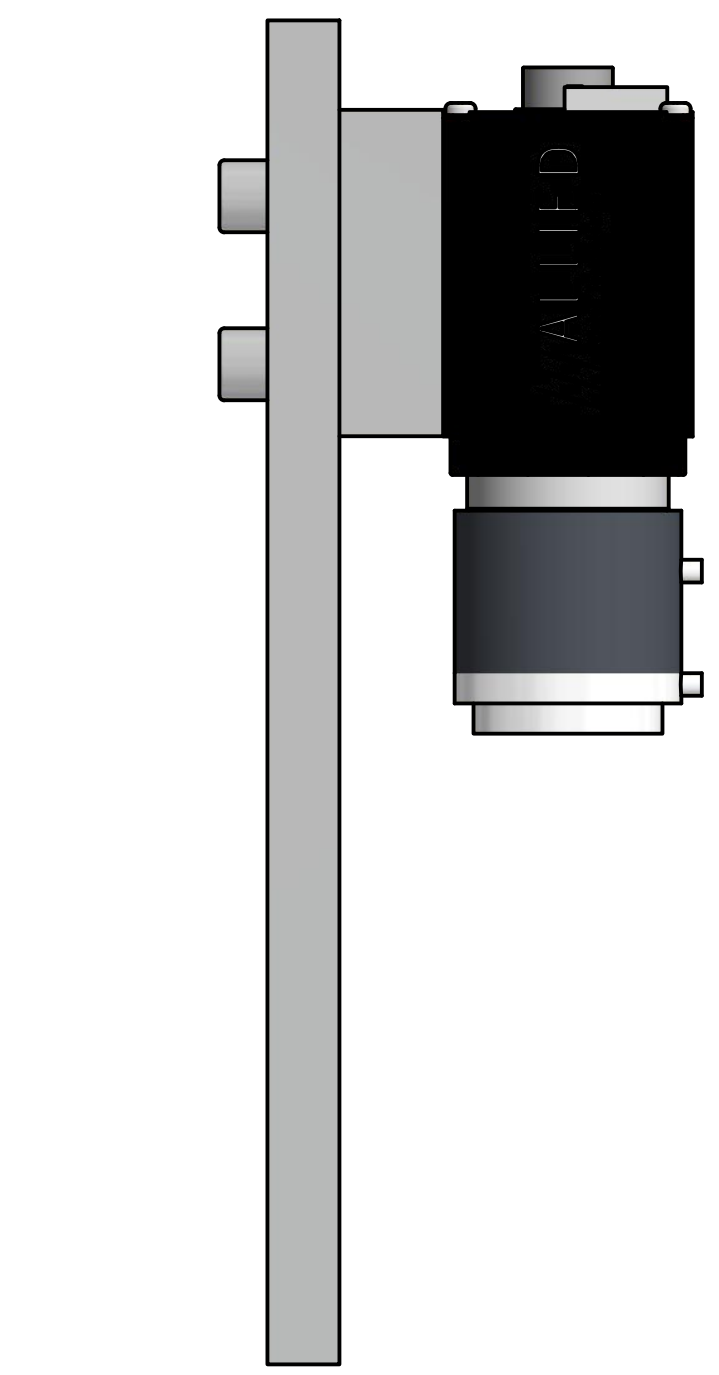
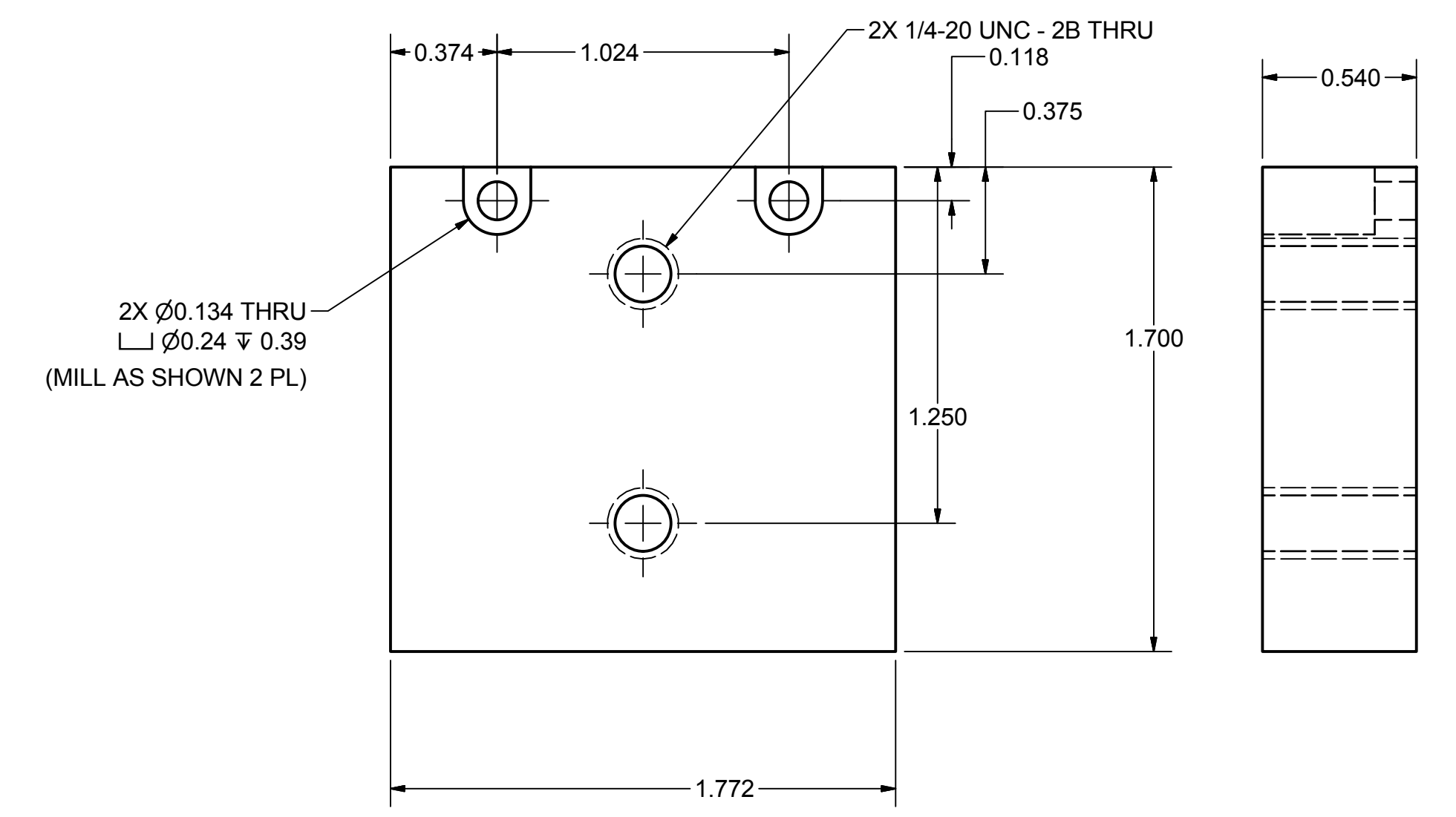
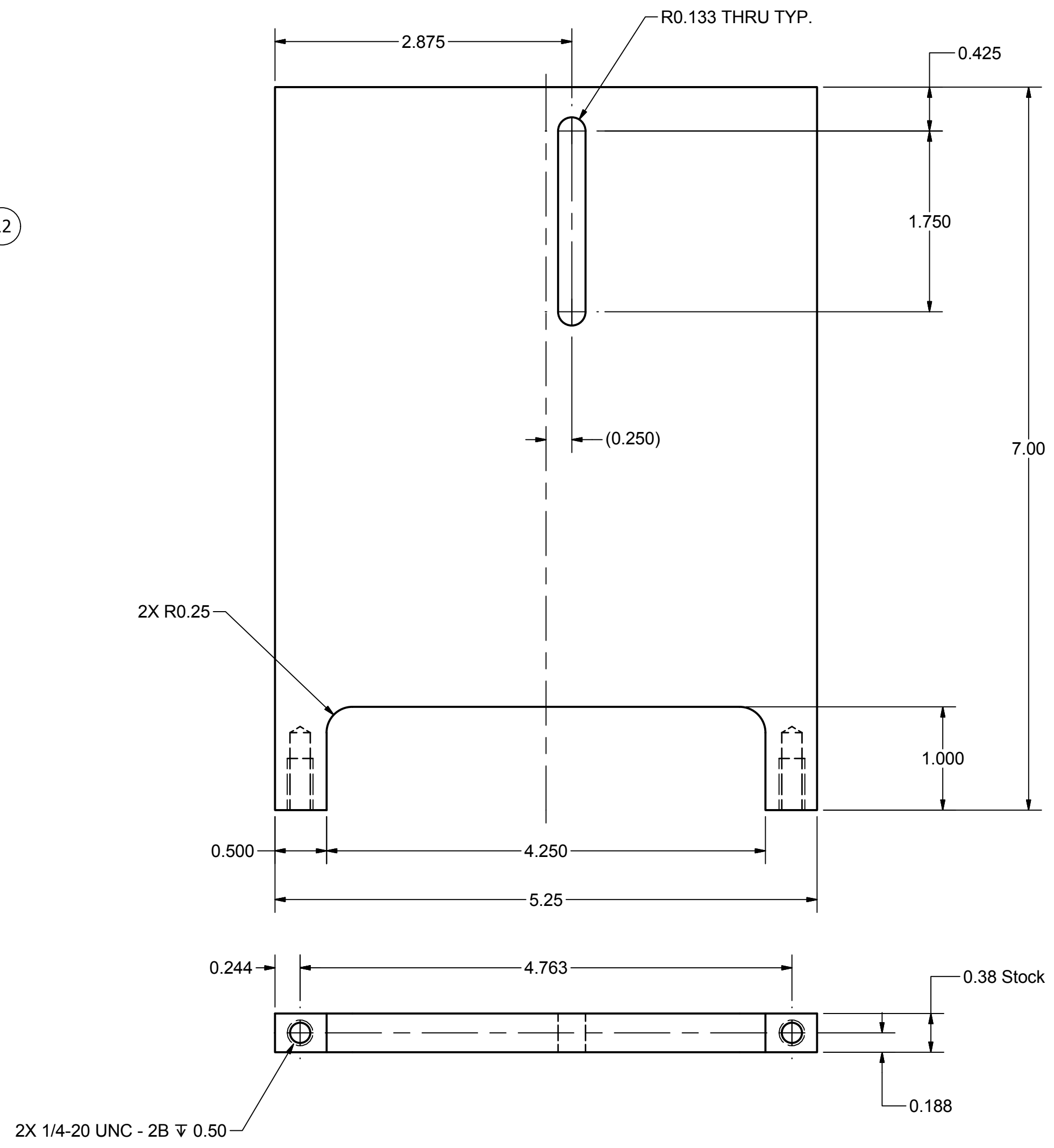
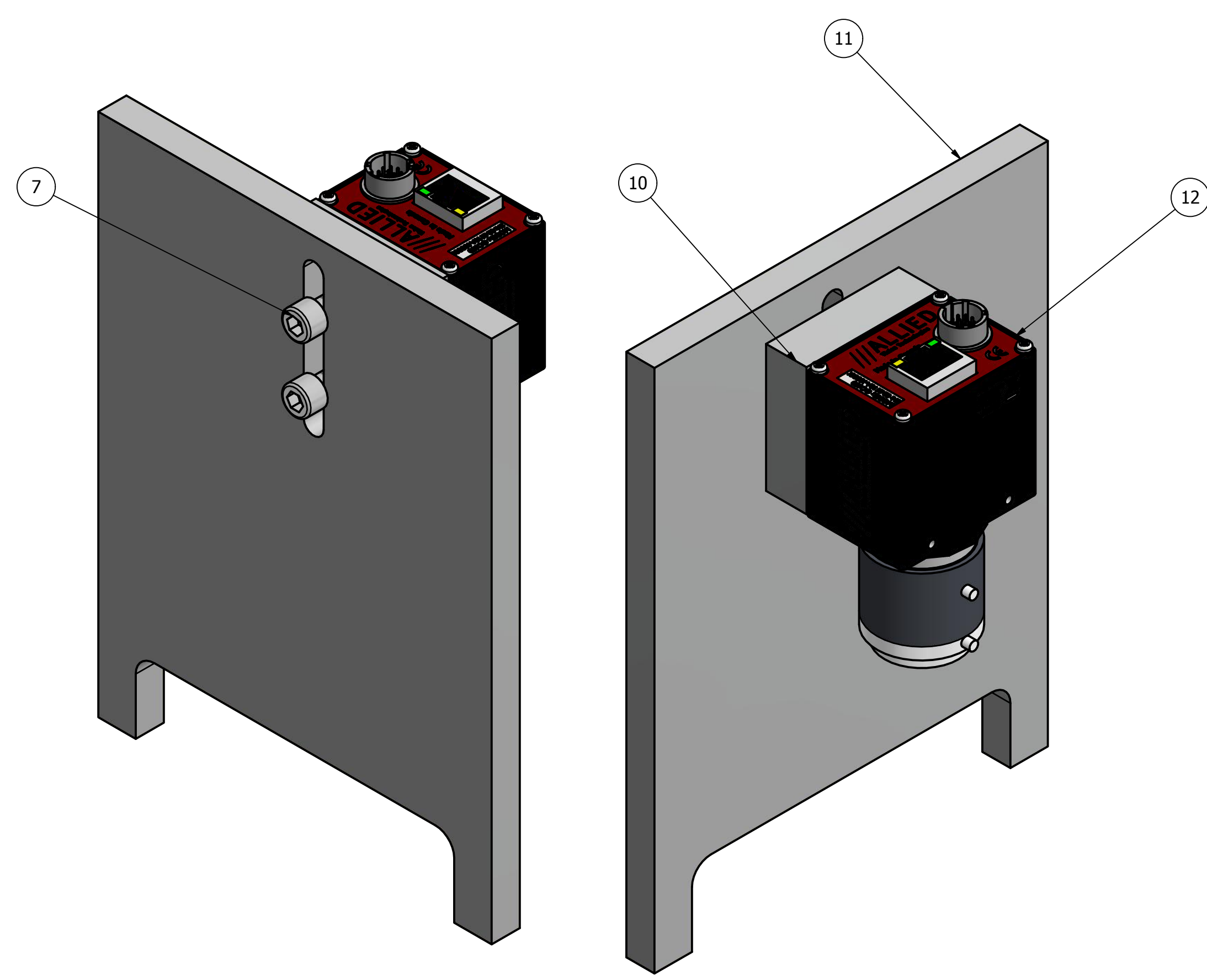
Parts List				
22	PURCHASED	12PT 5/16"-24 x 1.25 SST Ag Pltd	10	Lesker #TBK31224125P
21	SHEET 6	Custom 4.62" CF Nipple	1	CLASSE
9	PURCHASED	Hex Nut 5/16"-24 SST	10	McMaster-Carr #91845A115
8	PURCHASED	12PT 5/16"-24 x 2.00 SST Ag Pltd	10	Lesker #TBS31224200P
7	PURCHASED	SHCS 1/4"-20 x 0.625 SST	2	McMaster-Carr #92196A539
6	PURCHASED	4-5/8" Copper CF Flange Gasket	2	Lesker #GA-0462
5	PURCHASED	4.62" CF Flanged Zero Length Kodial Glass Viewport	1	Lesker #VPZL-463
4	PURCHASED	Tee, 4.5in CF, 3.63in Port Length	1	KJ Lesker - T-0462
3	SHEET 5	Camera Mount Base Ring	1	CLASSE
2	SHEET 3	Stationary Viewer Subassembly	1	CLASSE
1	SHEET 2	Mounted Camera Subassembly	1	CLASSE

ITEM	DWG. NO.	DESCRIPTION	QUANTITY			REMARKS	REV.
			G1	G2	G3		
PRINT DISTR. PLOT DATE: 2/15/2018 CAD FILE NAME: 7208-302.idw							
CR-1 UNLESS OTHERWISE SPECIFIED: DIMENSIONS ARE IN INCHES: TOLERANCES ON: .0 ± .02 .000 ± .005 FRACTIONS ± 1/32 ANGLES ± 0.5° ALL SURFACES		 Cornell Laboratory for Accelerator-based ScienceS and Education (CLASSE)					
CHECKED BY: N Boulton APPROVED BY: Y Li		DRAWN BY: S Hartman DRAWN FOR: Y Li		DATE: 1/9/2018	SCALE: D	7208-302 SH. NO. 1 OF 6	

THESE DRAWINGS, WHICH CONTAIN PROPRIETARY INFORMATION, ARE THE PROPERTY OF CORNELL UNIVERSITY. USE OF THESE DRAWINGS BEYOND THE INTENDED PURPOSE IN SUPPORT OF OUR RESEARCH AS DESCRIBED AND FUNDED BY OUR SPONSORING AGENCIES MUST BE NEGOTIATED AND APPROVED IN ADVANCE BY CORNELL UNIVERSITY.

SECTION A-A
SCALE .75

REVISIONS				
SYM	ZONE	DESCRIPTION	DATE	APP
		Initial Release	1/22/18	SWH
A		Replace model of Camera (#12) and modified Part #10 for the new camera	1/24/18	YL



1 Mounted Camera Subassembly
 FILE NAME: 7208-302
 SHEET NO.: 2
 DFT. SCALE: 1.5
 MATERIAL: As Noted
 QTY: 1
 NOTES:

11 Camera Vertical Mount Plate
 FILE NAME: 7208-302
 SHEET NO.: 2
 DFT. SCALE: 1: 1
 MATERIAL: 6061-T6 Aluminum
 QTY: 1
 NOTES:

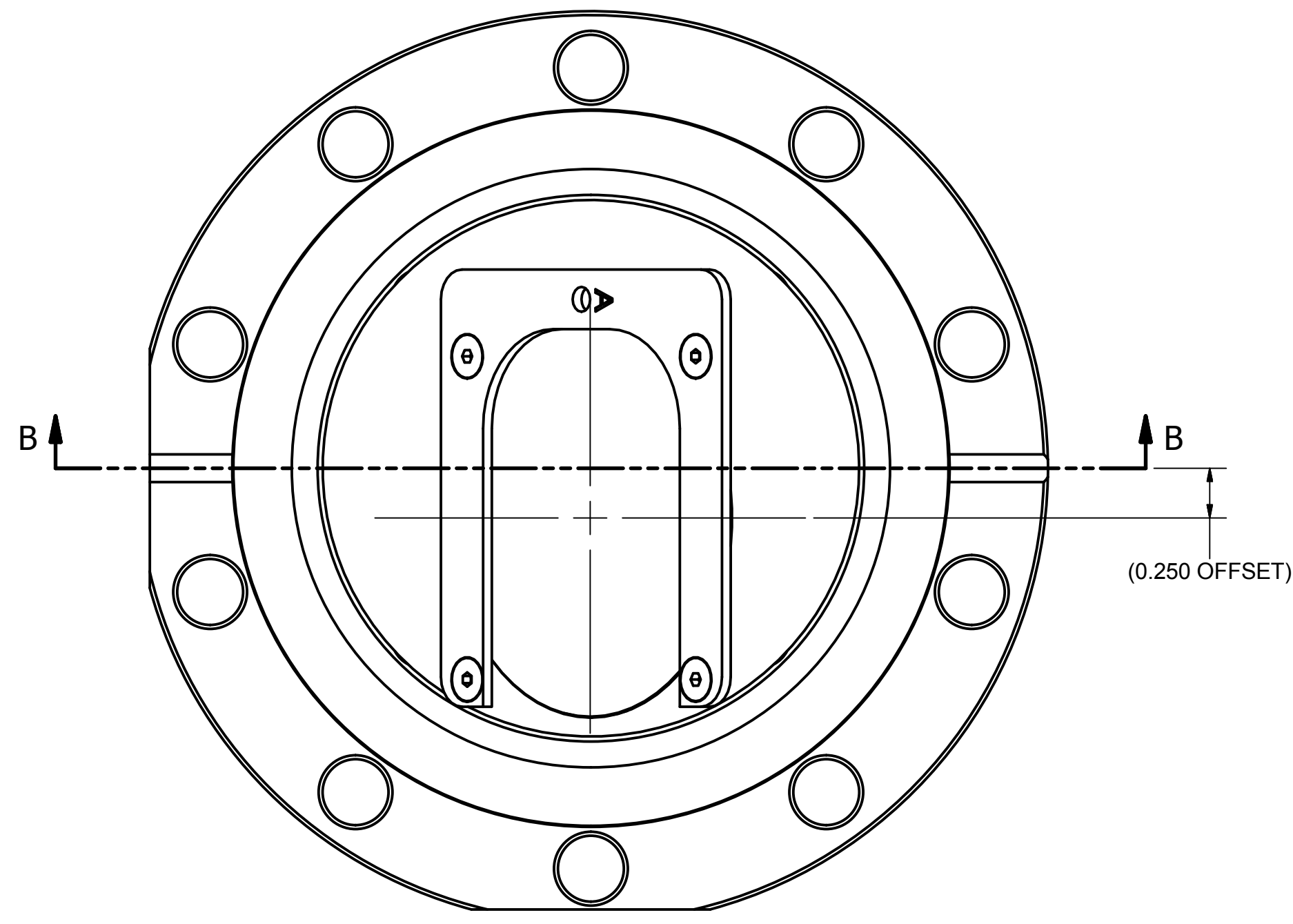
10 Camera Mount Block
 FILE NAME: 7208-302
 SHEET NO.: 2
 DFT. SCALE: 2: 1
 MATERIAL: 6061-T6 Aluminum
 QTY: 1
 NOTES:

Parts List					
ITEM	DWG. NO.	DESCRIPTION	QTY	REMARKS	REV.
14	PURCHASED	SHCS M3x0.50 x 8mm BO Steel	2	McMaster-Carr #91290A113	
13	PURCHASED	FA/Machine Vision Fixed Focal Lens, 25mm Focal Length, Manual Adjustment	1	Fujifilm #HF25HA-1B	
12	PURCHASED	Machine Vision Camera, Prosilica GC, 90fps, Monochrome	1	Allied Vision #Prosilica GC650-01	
11	SHEET 2	Camera Vertical Mount Plate	1	CLASSE	
10	SHEET 2	Camera Mount Block	1	CLASSE	
7	PURCHASED	SHCS 1/4"-20 x 0.625 SST	2	McMaster-Carr #92196A539	

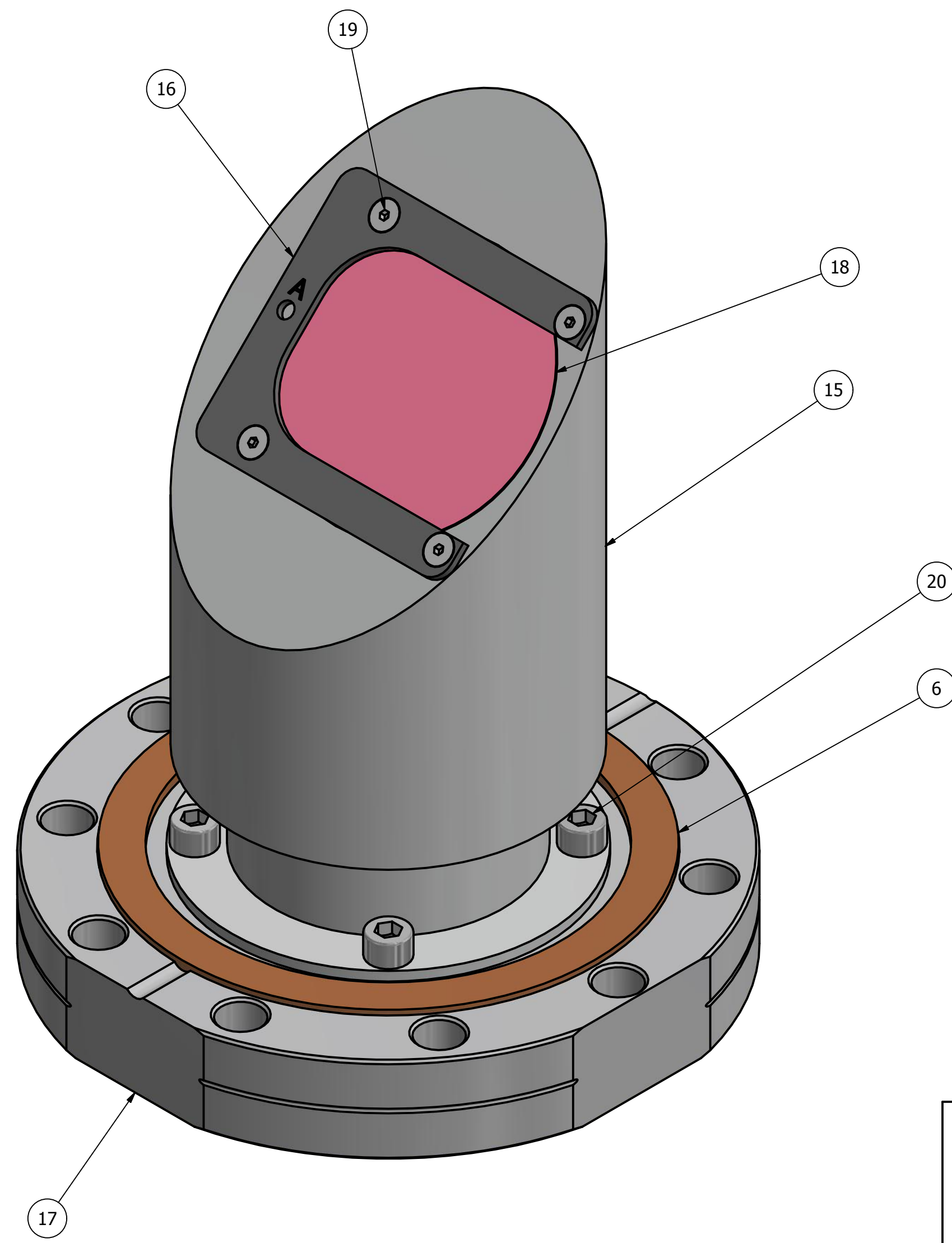
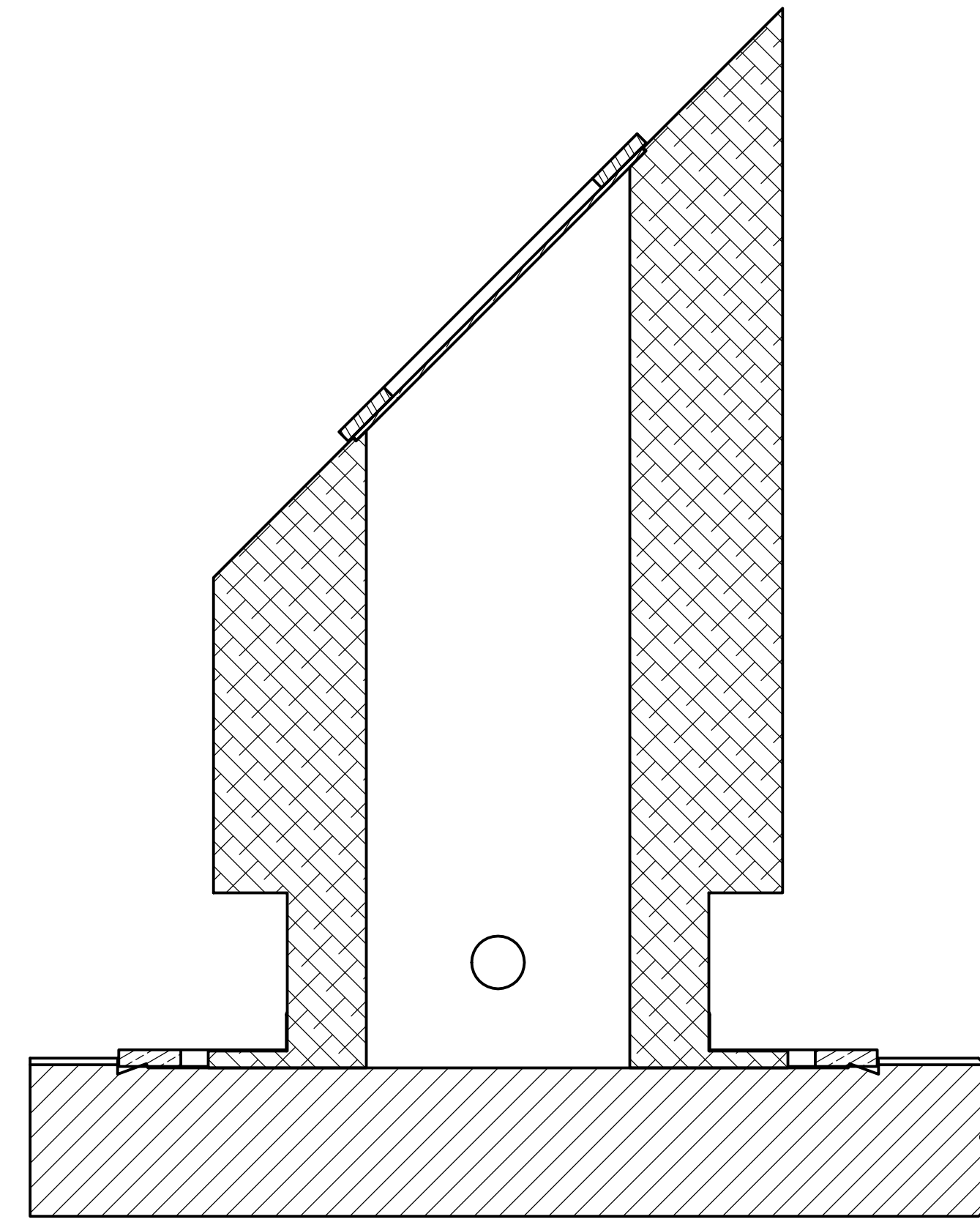
D	PRINT	PLOT DATE: 2/15/2018 CAD FILE NAME: 7208-302.idw	CR-1	UNLESS OTHERWISE SPECIFIED: DIMENSIONS ARE IN INCHES: TOLERANCES ON: 0 ± .02 .00 ± .010 000 ± .005 FRACTIONS ± 1/32 ANGLES ± 0.5° ALL SURFACES	Cornell Laboratory for Accelerator-based ScienceS and Education (CLASSE)	Stationary Viewer for Fractional Arc Test Camera Mounting Subassembly	DRAWN BY: S Hartman DRAWN FOR: Y Li DATE: 1/9/2018 SCALE: D 7208-302 SH. NO. 2 OF 6 REV. A
	DISTR.						

THESE DRAWINGS, WHICH CONTAIN PROPRIETARY INFORMATION, ARE THE PROPERTY OF CORNELL UNIVERSITY. USE OF THESE DRAWINGS BEYOND THE INTENDED PURPOSE IN SUPPORT OF OUR RESEARCH AS DESCRIBED AND FUNDED BY OUR SPONSORING AGENCIES MUST BE NEGOTIATED AND APPROVED IN ADVANCE BY CORNELL UNIVERSITY.

REVISIONS				
SYM	ZONE	DESCRIPTION	DATE	APP
		Initial Release	1/22/18	SWH



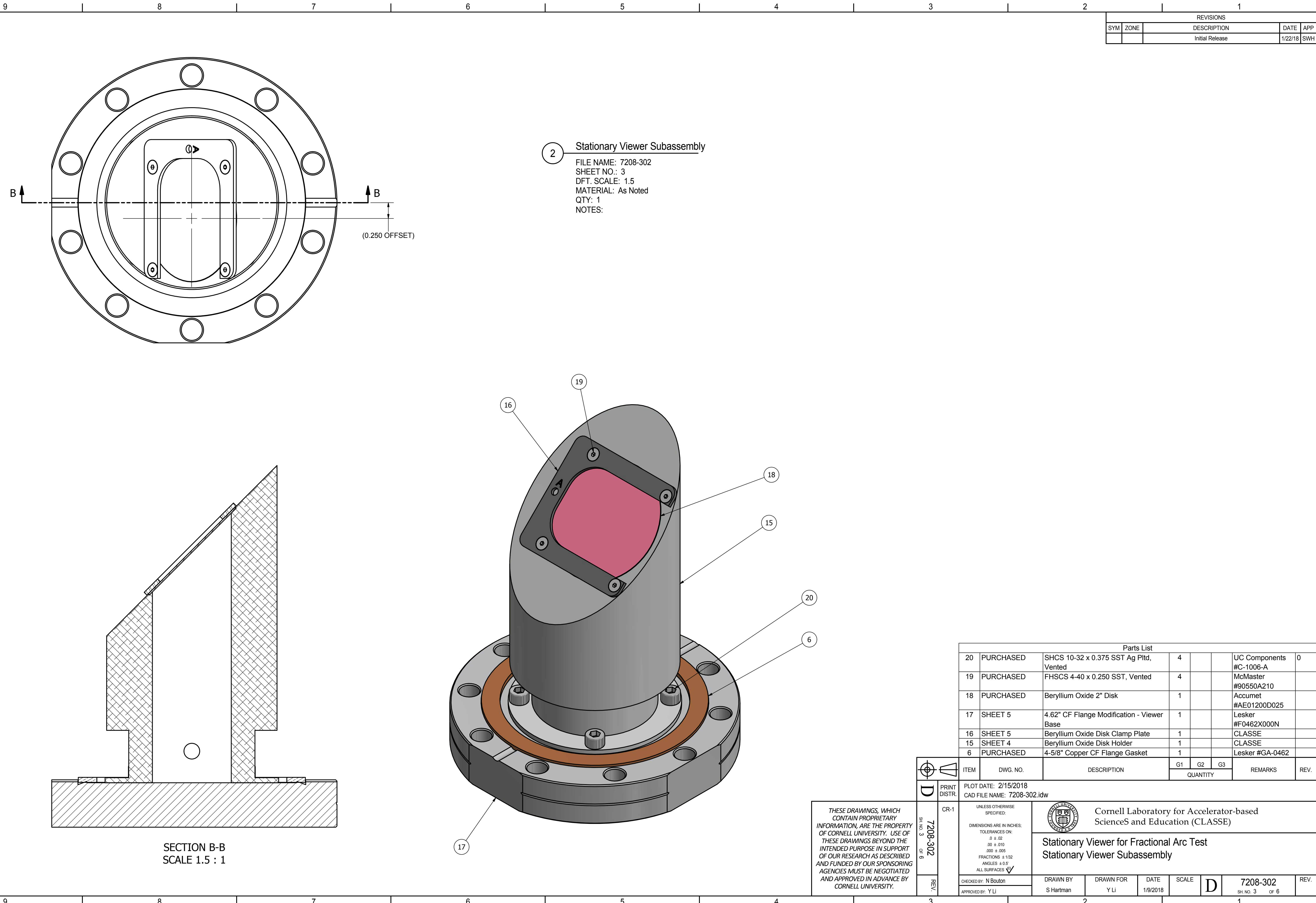
2 Stationary Viewer Subassembly
 FILE NAME: 7208-302
 SHEET NO.: 3
 DFT. SCALE: 1.5
 MATERIAL: As Noted
 QTY: 1
 NOTES:



Parts List						
20	PURCHASED	SHCS 10-32 x 0.375 SST Ag Pltd, Vented	4		UC Components #C-1006-A	0
19	PURCHASED	FHSCS 4-40 x 0.250 SST, Vented	4		McMaster #90550A210	
18	PURCHASED	Beryllium Oxide 2" Disk	1		Accumet #AE01200D025	
17	SHEET 5	4.62" CF Flange Modification - Viewer Base	1		Lesker #F0462X000N	
16	SHEET 5	Beryllium Oxide Disk Clamp Plate	1		CLASSE	
15	SHEET 4	Beryllium Oxide Disk Holder	1		CLASSE	
6	PURCHASED	4-5/8" Copper CF Flange Gasket	1		Lesker #GA-0462	

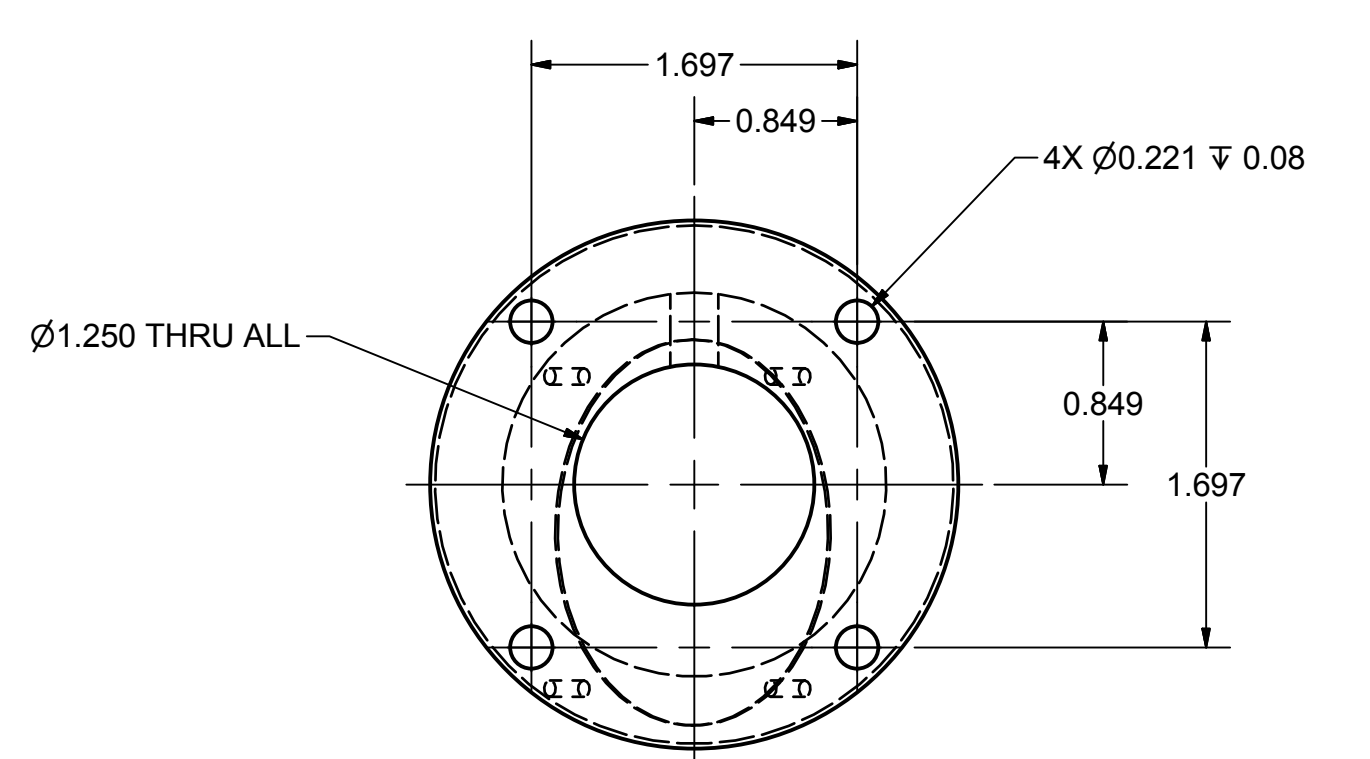
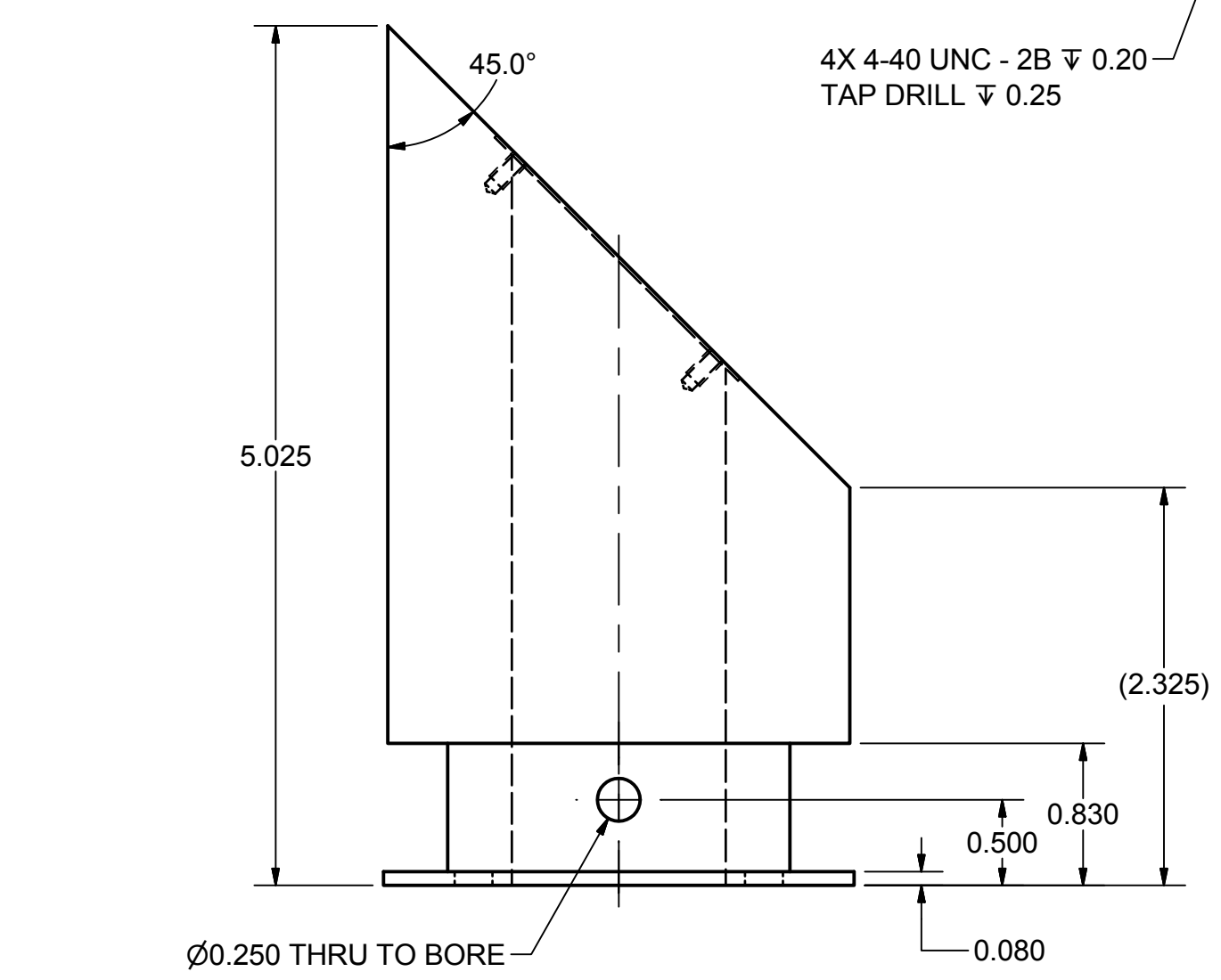
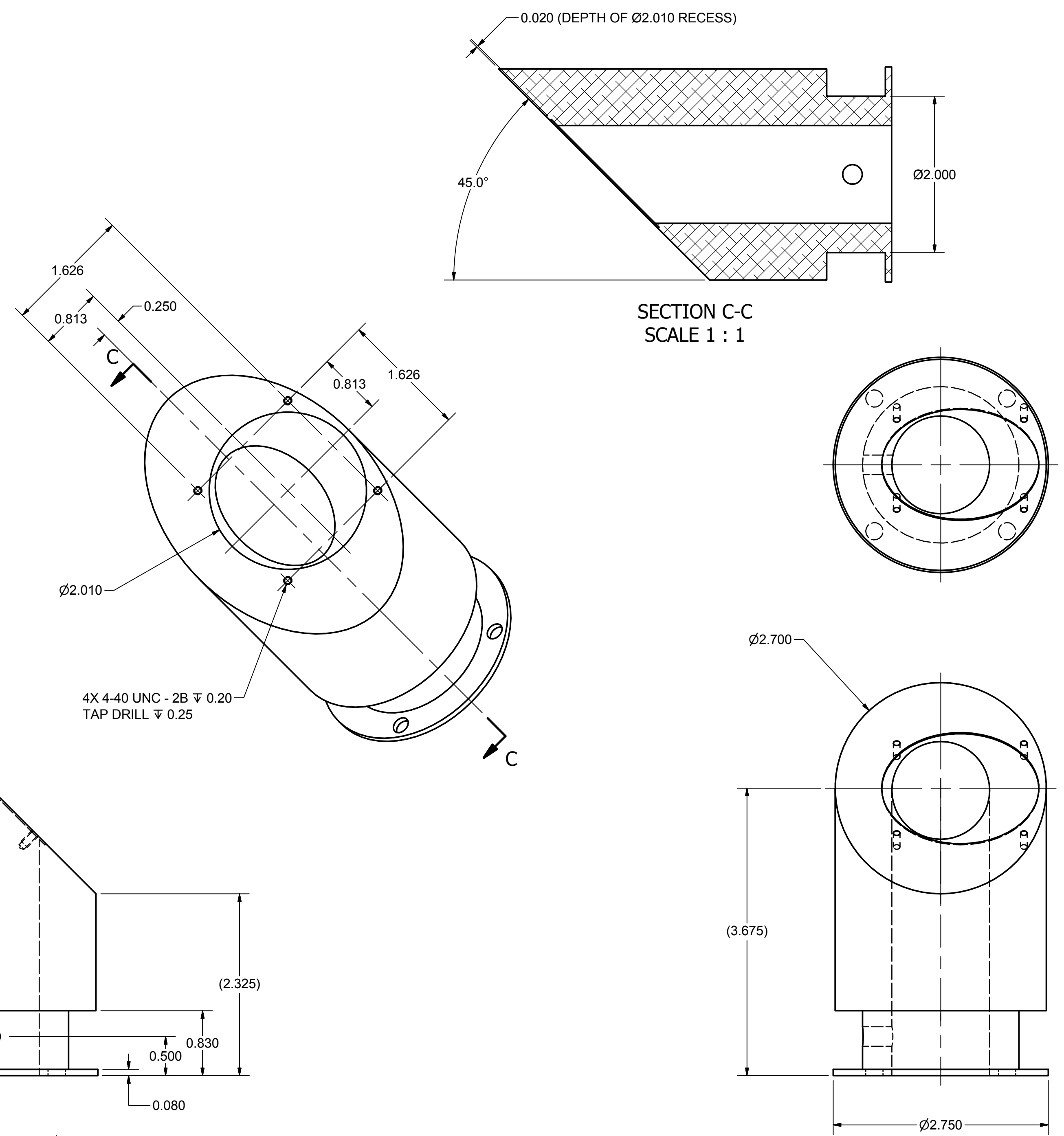
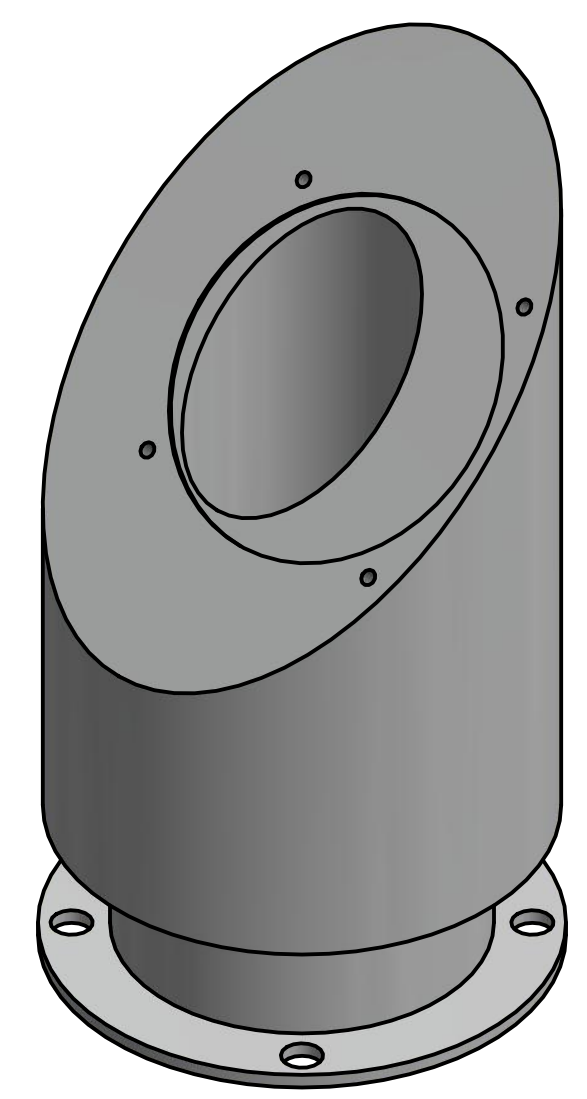
ITEM	DWG. NO.	DESCRIPTION	G1	G2	G3	REMARKS	REV.
			QUANTITY				
PLOT DATE: 2/15/2018 CAD FILE NAME: 7208-302.idw							
PRINT DISTR. D		CR-1 UNLESS OTHERWISE SPECIFIED: DIMENSIONS ARE IN INCHES: TOLERANCES ON: 0 ± .02 .00 ± .010 .000 ± .005 FRACTIONS ± 1/32 ANGLES ± 0.5° ALL SURFACES ✓		Cornell Laboratory for Accelerator-based ScienceS and Education (CLASSE)			
SHEET NO. 3 OF 6 7208-302		DRAWN BY S Hartman		DRAWN FOR Y Li		DATE 1/9/2018	
REV.		SCALE D		7208-302 SH. NO. 3 OF 6		REV.	

THESE DRAWINGS, WHICH CONTAIN PROPRIETARY INFORMATION, ARE THE PROPERTY OF CORNELL UNIVERSITY. USE OF THESE DRAWINGS BEYOND THE INTENDED PURPOSE IN SUPPORT OF OUR RESEARCH AS DESCRIBED AND FUNDED BY OUR SPONSORING AGENCIES MUST BE NEGOTIATED AND APPROVED IN ADVANCE BY CORNELL UNIVERSITY.



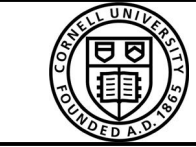
REVISIONS				
SYM	ZONE	DESCRIPTION	DATE	APP
		Initial Release	1/22/18	SWH

15 Beryllium Oxide Disk Holder
 FILE NAME: 7208-302
 SHEET NO.: 4
 DFT. SCALE: 1 : 1
 MATERIAL: 6061-T6 Aluminum
 QTY: 1
 NOTES:



THESE DRAWINGS, WHICH CONTAIN PROPRIETARY INFORMATION, ARE THE PROPERTY OF CORNELL UNIVERSITY. USE OF THESE DRAWINGS BEYOND THE INTENDED PURPOSE IN SUPPORT OF OUR RESEARCH AS DESCRIBED AND FUNDED BY OUR SPONSORING AGENCIES MUST BE NEGOTIATED AND APPROVED IN ADVANCE BY CORNELL UNIVERSITY.

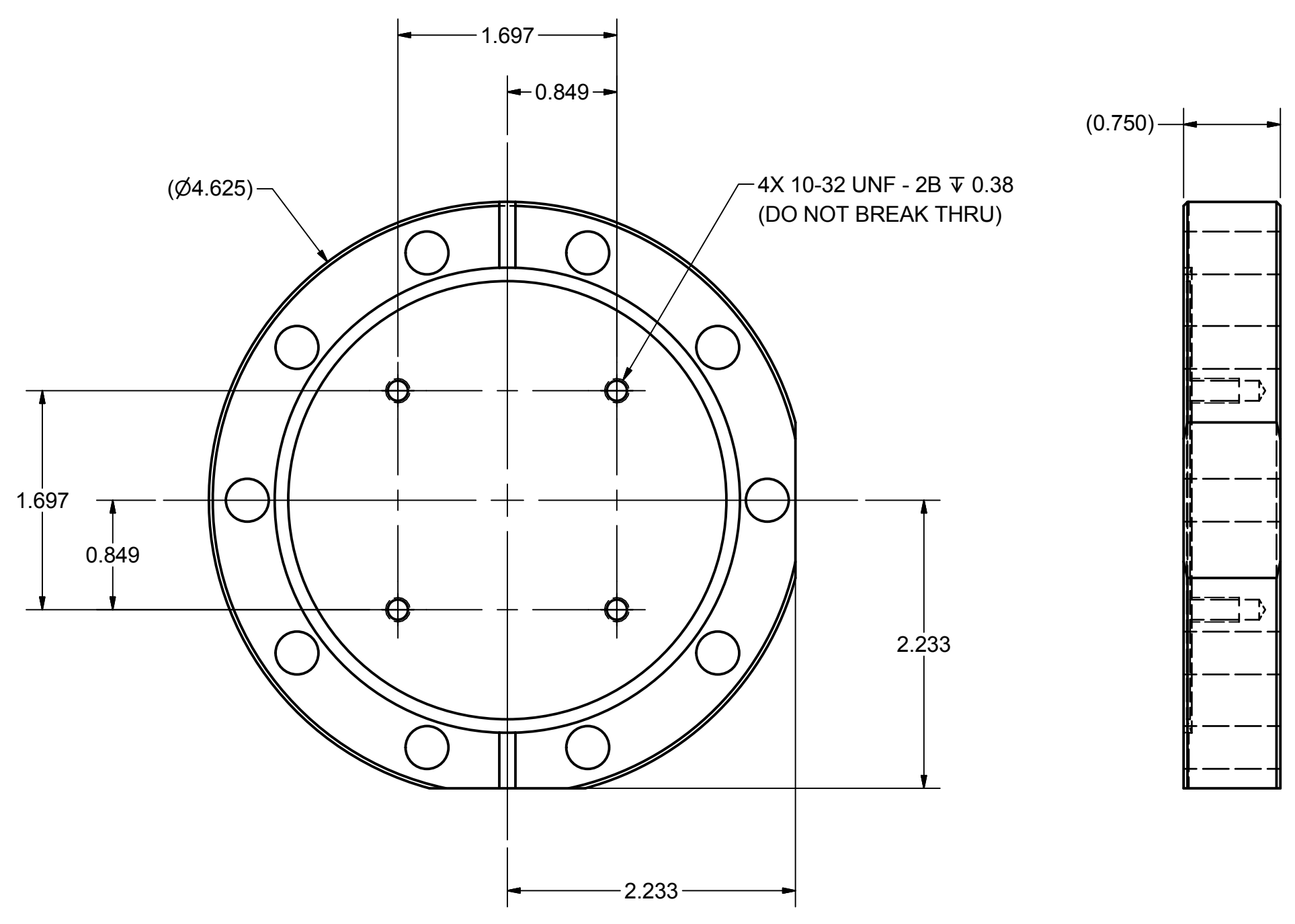
REV	ITEM	DWG. NO.	DESCRIPTION	G1	G2	G3	REMARKS	REV.
				QUANTITY				
D	PRINT DISTR.	7208-302	PLOT DATE: 2/15/2018 CAD FILE NAME: 7208-302.idw					
CR-1			UNLESS OTHERWISE SPECIFIED: DIMENSIONS ARE IN INCHES; TOLERANCES ON: 0 ± .02 .000 ± .005 FRACTIONS ± 1/32 ANGLES ± 0.5° ALL SURFACES					
	CHECKED BY: N Boulton	DRAWN BY: S Hartman	DRAWN FOR: Y Li	DATE: 1/9/2018	SCALE: D	7208-302		
	APPROVED BY: Y Li					SH. NO. 4 OF 6		



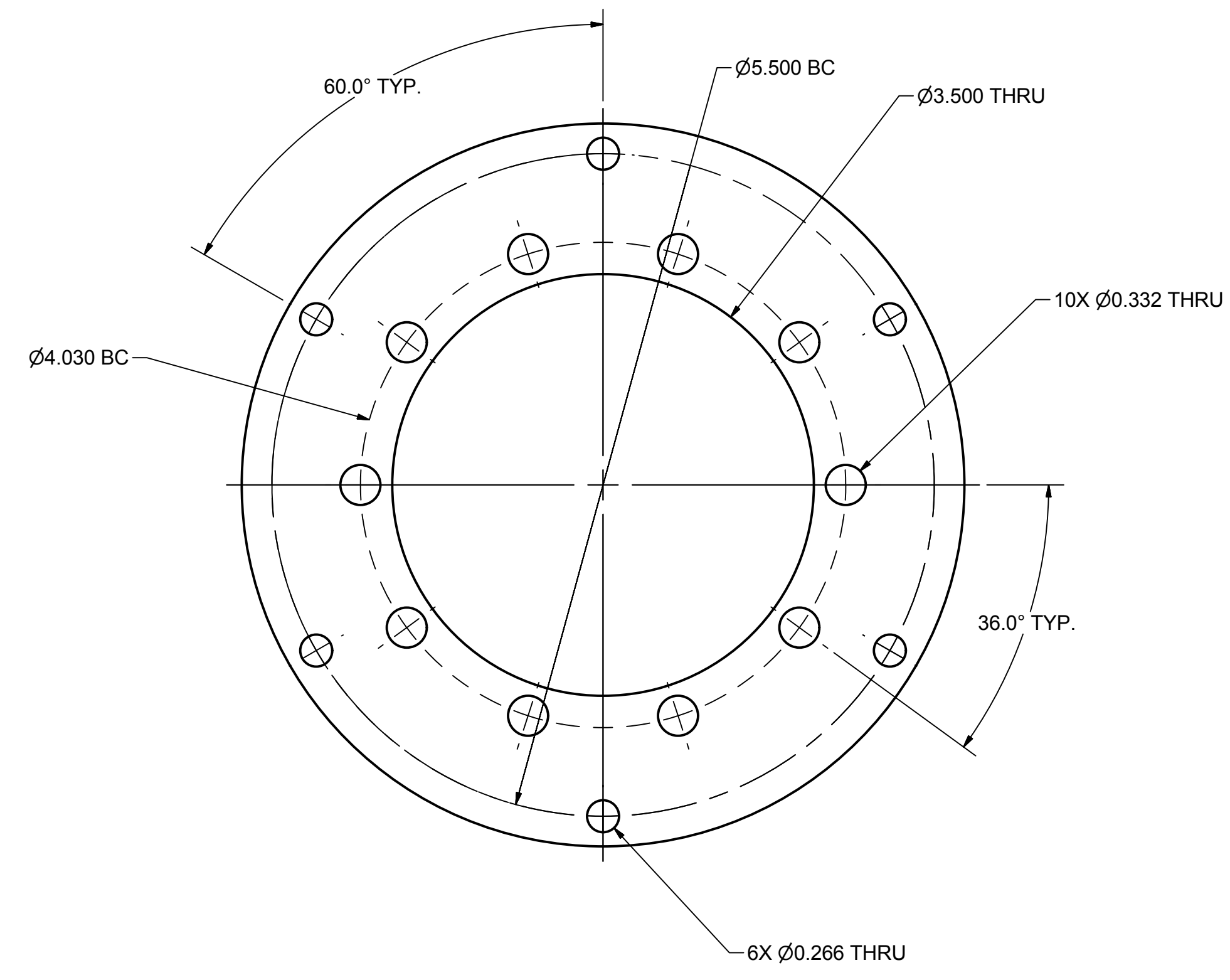
Cornell Laboratory for Accelerator-based ScienceS and Education (CLASSE)

Stationary Viewer for Fractional Arc Test
 Disk Holder Detail

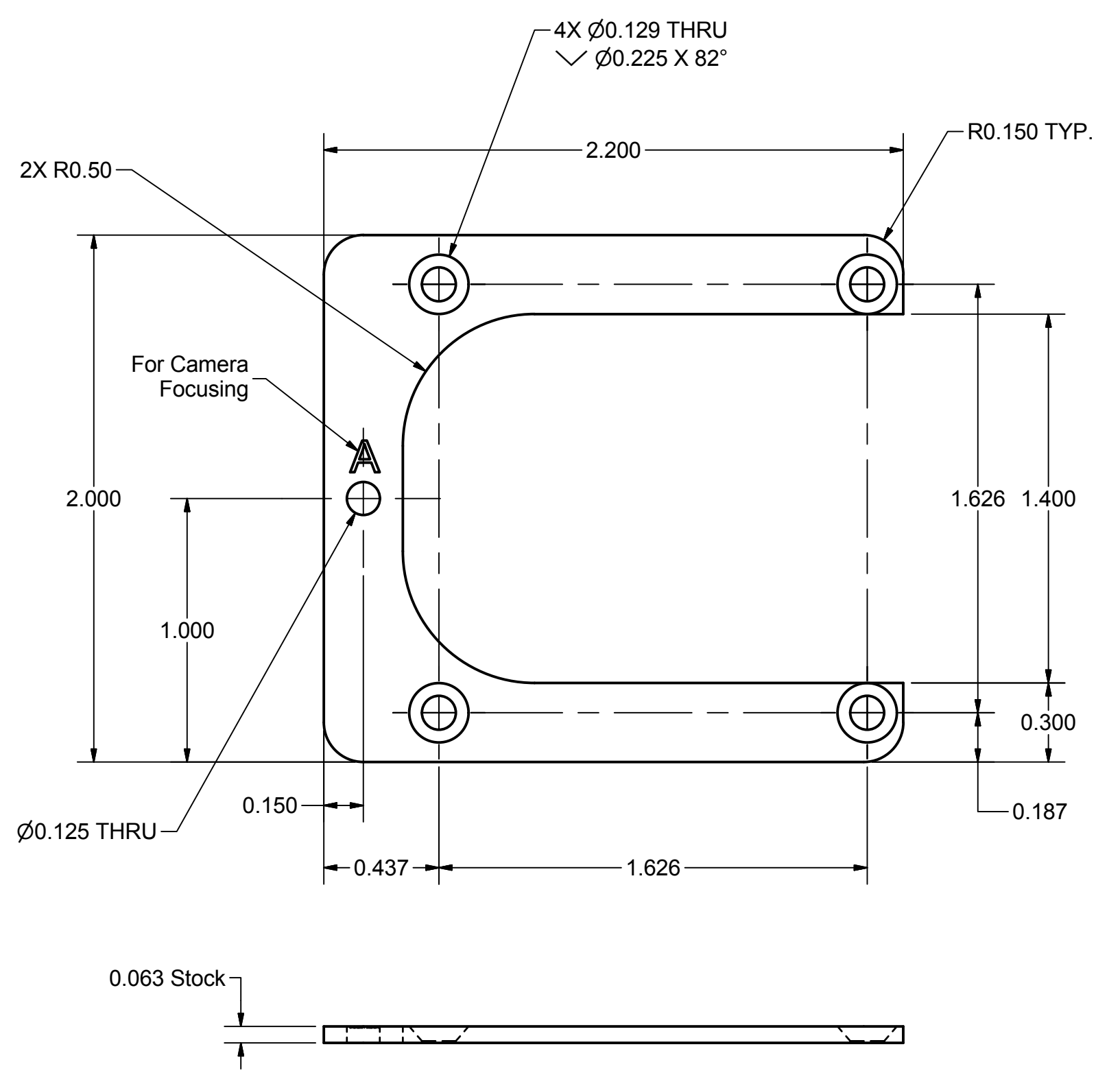
REVISIONS				
SYM	ZONE	DESCRIPTION	DATE	APP
		Initial Release	1/22/18	SWH
A		Added Sheet 6 (SWH)	2/14/18	YL



17 Viewer Base Flange
 FILE NAME: 7208-302
 SHEET NO.: 5
 DFT. SCALE: 1 : 1
 MATERIAL: Lesker #F0462X000N
 QTY: 1
 NOTES: Make From Lesker #F0462X000N
 (4.625in CF, Blank, Non-Rotatable, Clearance, 304L SS)



3 Camera Mount Base Ring
 FILE NAME: 7208-302
 SHEET NO.: 5
 DFT. SCALE: 1 : 1
 MATERIAL: 304L Stainless Steel
 QTY: 1
 NOTES:

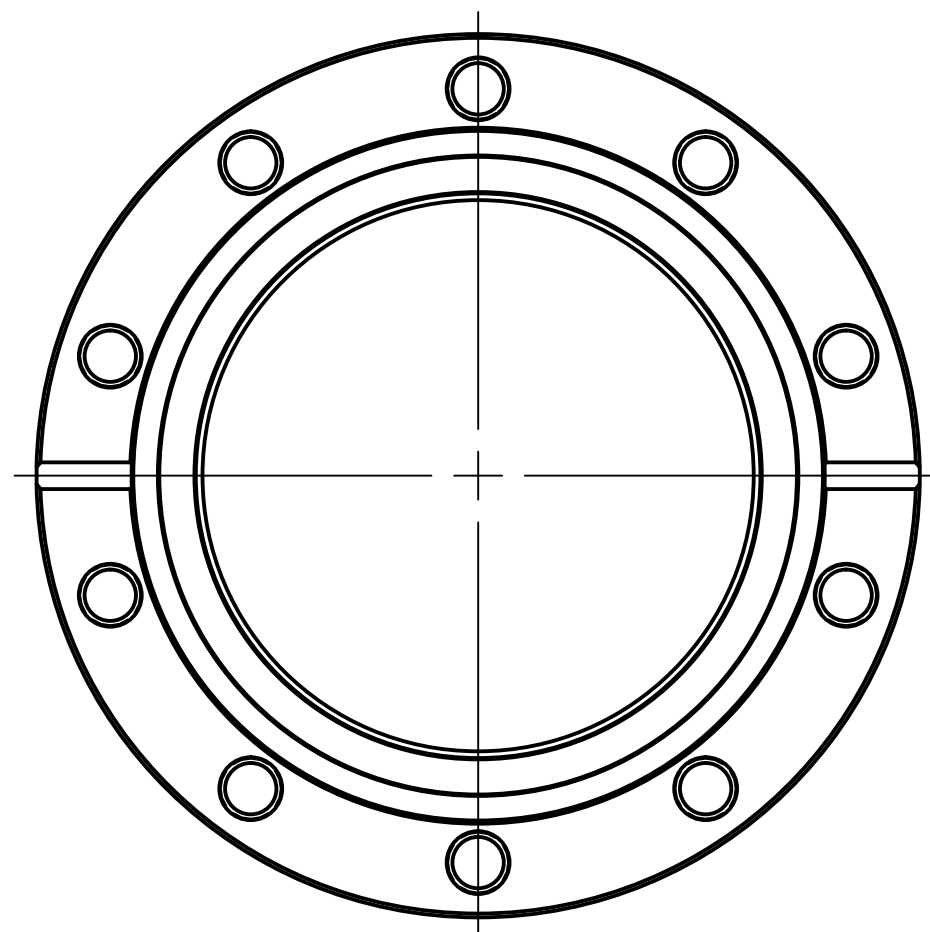
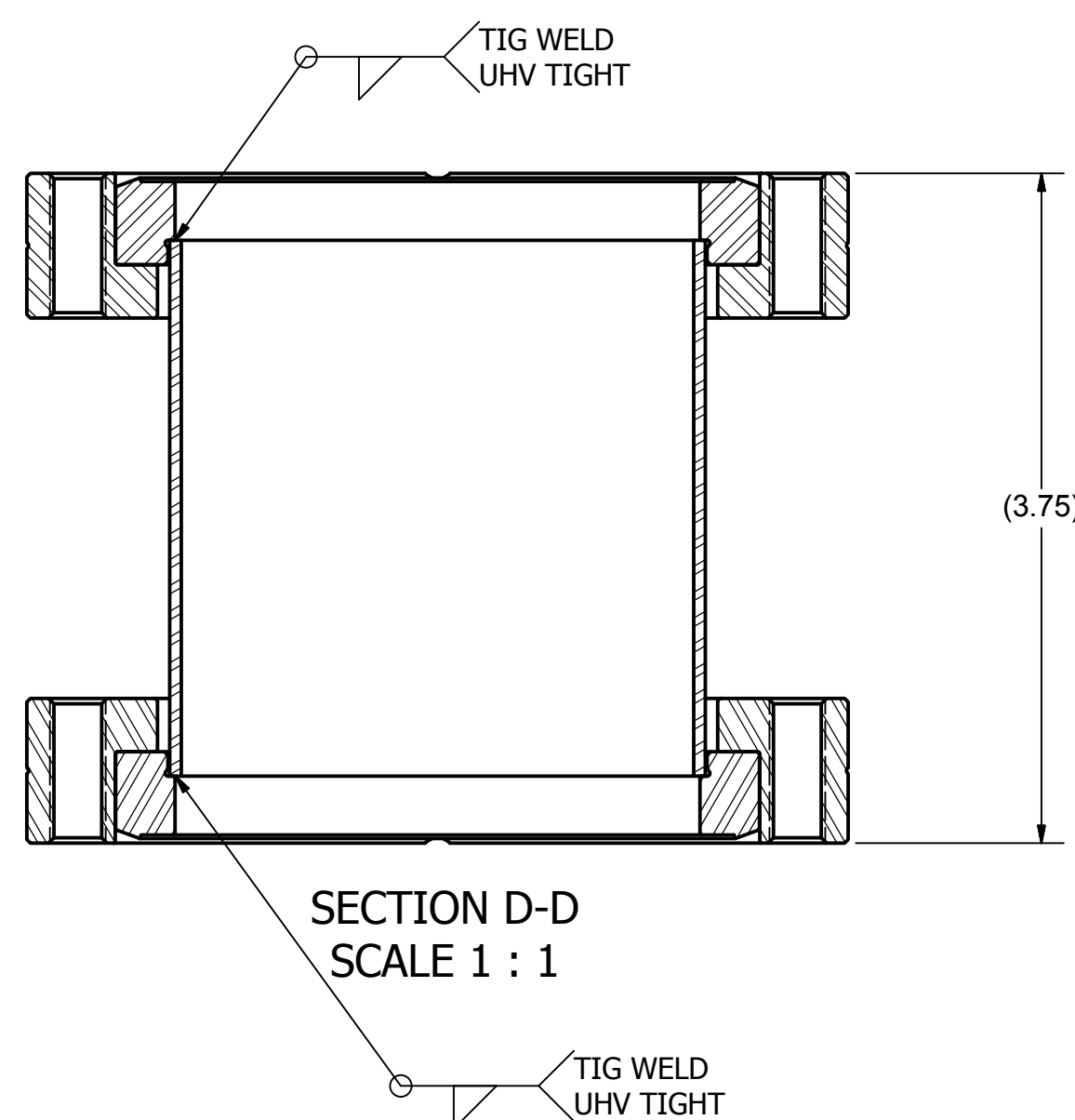
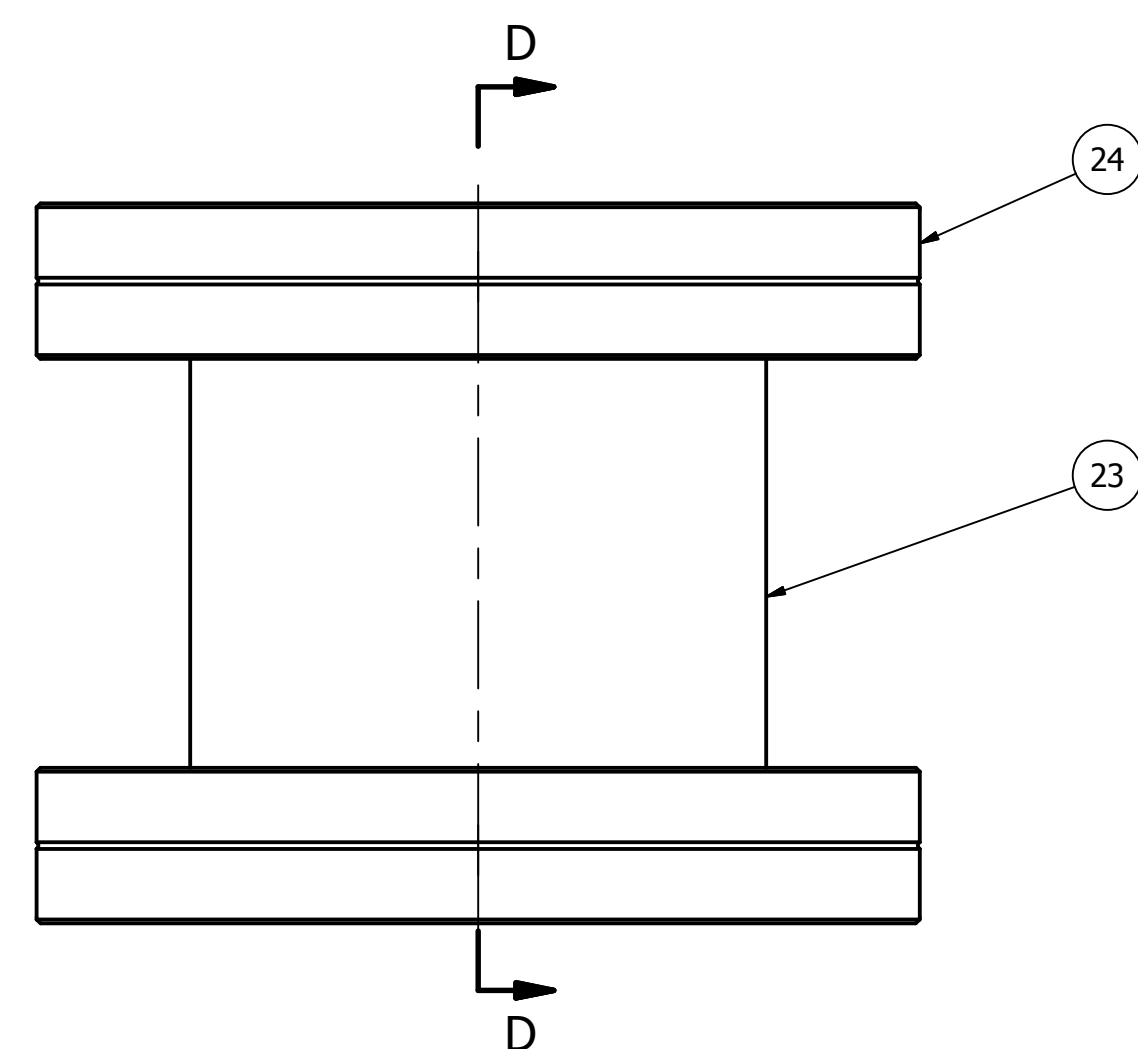


16 Beryllium Oxide Disk Clamp Plate
 FILE NAME: 7208-302
 SHEET NO.: 5
 DFT. SCALE: 2 : 1
 MATERIAL: 304L Stainless Steel
 QTY: 1
 NOTES:

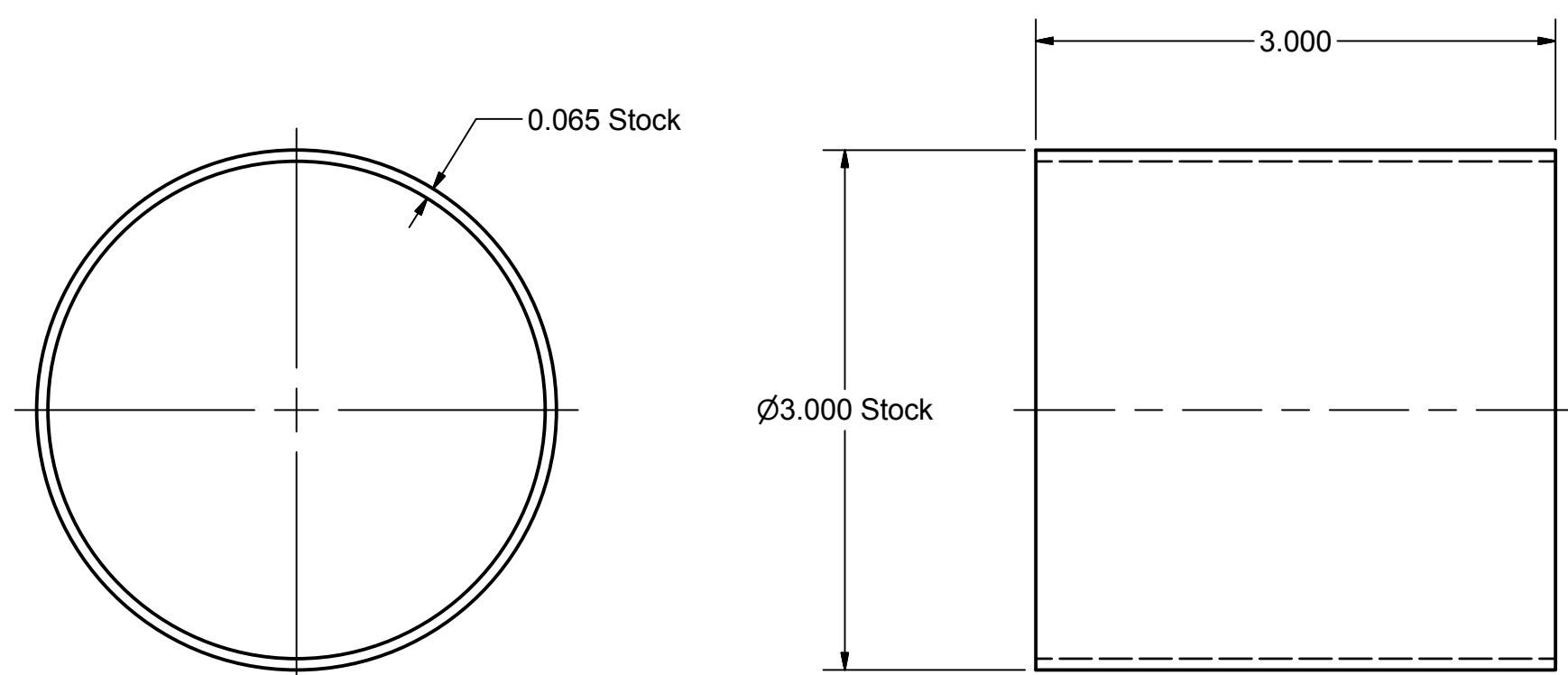
ITEM	DWG. NO.	DESCRIPTION	G1	G2	G3	REMARKS	REV.
			QUANTITY				
D	7208-302	CR-1					
PRINT DISTR.		PLOT DATE: 2/15/2018 CAD FILE NAME: 7208-302.idw					
UNLESS OTHERWISE SPECIFIED: DIMENSIONS ARE IN INCHES: TOLERANCES ON: 0 ± .02 .000 ± .005 FRACTIONS ± 1/32 ANGLES ± 0.5° ALL SURFACES		Cornell Laboratory for Accelerator-based ScienceS and Education (CLASSE)					
Stationary Viewer for Fractional Arc Test Misc. Components							
CHECKED BY: N Boulton	DRAWN BY: S Hartman	DRAWN FOR: Y Li	DATE: 1/9/2018	SCALE: D	7208-302 SH. NO 5 OF 6	REV. A	

THESE DRAWINGS, WHICH CONTAIN PROPRIETARY INFORMATION, ARE THE PROPERTY OF CORNELL UNIVERSITY. USE OF THESE DRAWINGS BEYOND THE INTENDED PURPOSE IN SUPPORT OF OUR RESEARCH AS DESCRIBED AND FUNDED BY OUR SPONSORING AGENCIES MUST BE NEGOTIATED AND APPROVED IN ADVANCE BY CORNELL UNIVERSITY.

REVISIONS				
SYM	ZONE	DESCRIPTION	DATE	APP
		Initial Release	2/14/18	SWH



21 Custom 4.62" CF Nipple
 FILE NAME: 7208-302
 SHEET NO.: 6
 DFT. SCALE: 1 : 1
 MATERIAL:
 QTY: 1 Per Assembly
 NOTES:



23 Custom Short Nipple Tube
 FILE NAME: 7208-302
 SHEET NO.: 6
 DFT. SCALE: 1 : 1
 MATERIAL: 3.000" Dia x .065 Wall 304L Stainless Steel Tubing
 QTY: 1 Per Assembly
 NOTES: Suggested Stock: Lesker #SST-03001
 (3.00" x .07 Wall 304L SST Tube)

Parts List						
ITEM	DWG. NO.	DESCRIPTION	G1	G2	G3	REMARKS
24	PURCHASED	4-5/8" CF, Bored 3", Rotatable, Tapped	2			Lesker #F0462X300RT
23	SHEET 6	Custom Short Nipple Tube	1			CLASSE

PRINT DISTR. D
 7208-302
 SH. NO. 6 OF 6

THESE DRAWINGS, WHICH CONTAIN PROPRIETARY INFORMATION, ARE THE PROPERTY OF CORNELL UNIVERSITY. USE OF THESE DRAWINGS BEYOND THE INTENDED PURPOSE IN SUPPORT OF OUR RESEARCH AS DESCRIBED AND FUNDED BY OUR SPONSORING AGENCIES MUST BE NEGOTIATED AND APPROVED IN ADVANCE BY CORNELL UNIVERSITY.

UNLESS OTHERWISE SPECIFIED: DIMENSIONS ARE IN INCHES: TOLERANCES ON: .0 ± .02 .00 ± .010 .000 ± .005 FRACTIONS ± 1/32 ANGLES ± 0.5° ALL SURFACES		Cornell Laboratory for Accelerator-based ScienceS and Education (CLASSE)
Stationary Viewer for Fractional Arc Test Custom Short Nipple		
CHECKED BY: N Boulton	DRAWN BY: S Hartman	DRAWN FOR: Y Li
APPROVED BY: Y Li	DATE: 1/9/2018	SCALE: D
7208-302		REV. 1