

AFE characterization

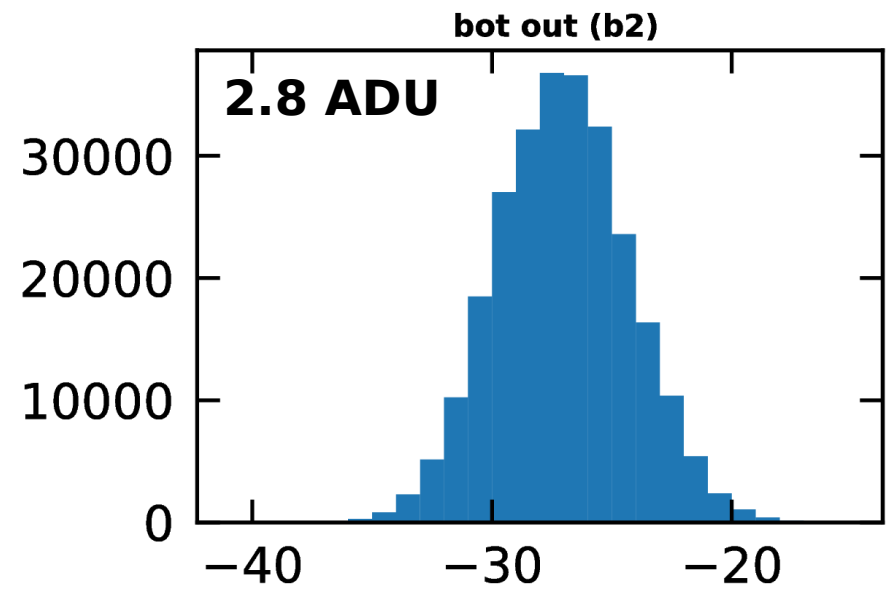
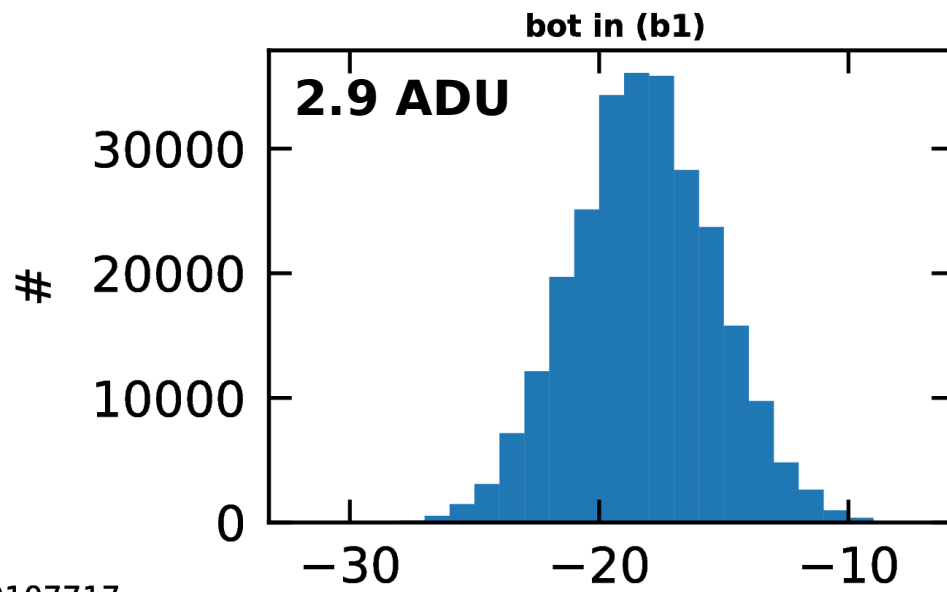
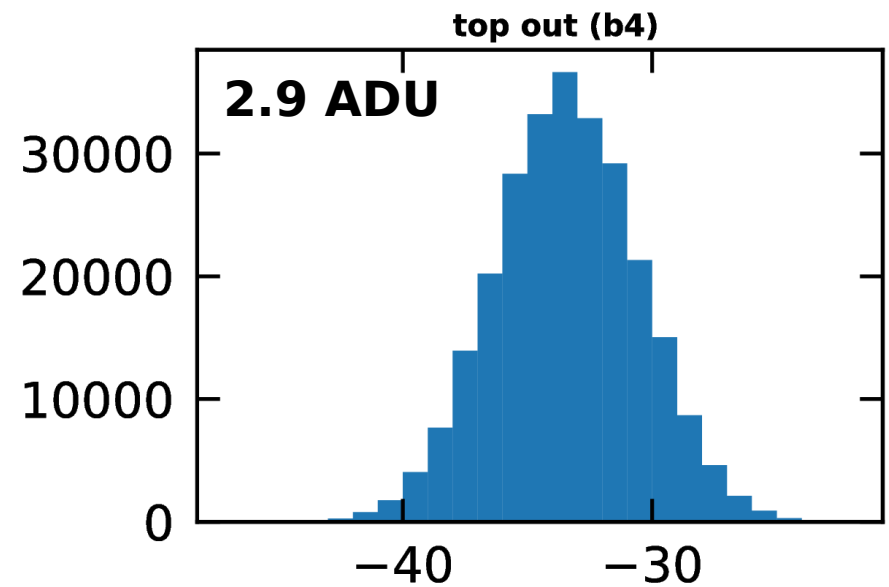
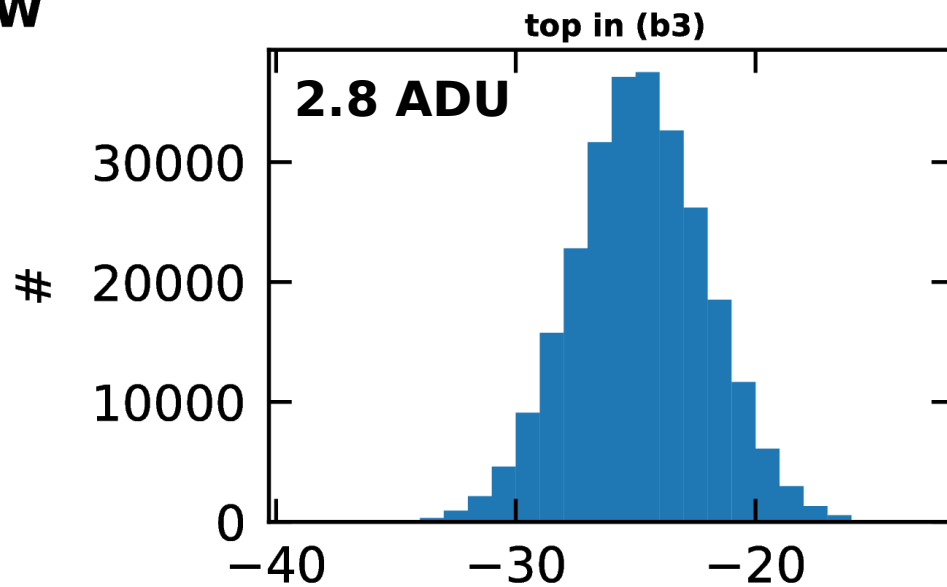
Antoine

CBPM meeting: October 20, 2023

4 AFE cards with the same final-design configuration

RMS noise

12W



Raw ADC values

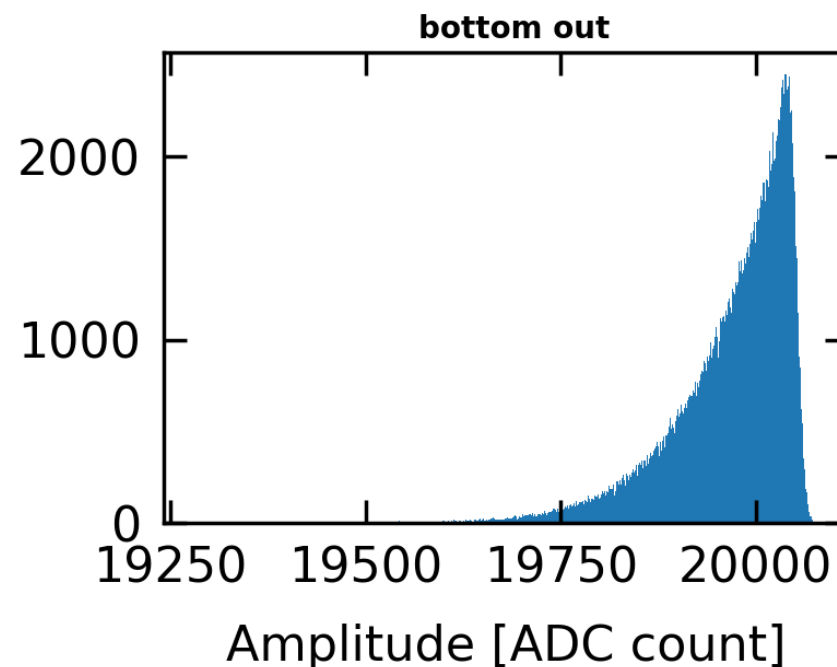
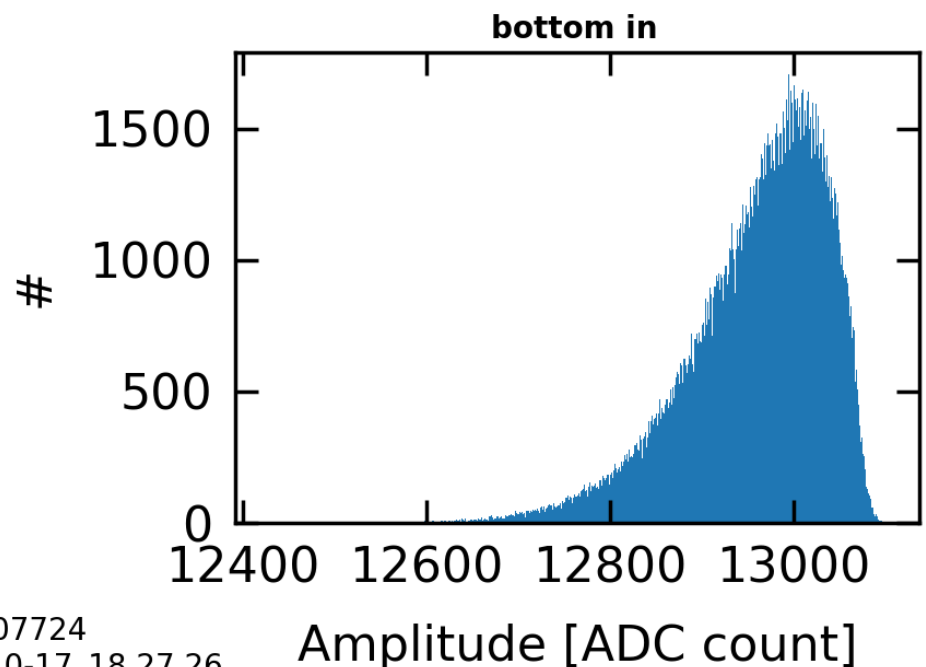
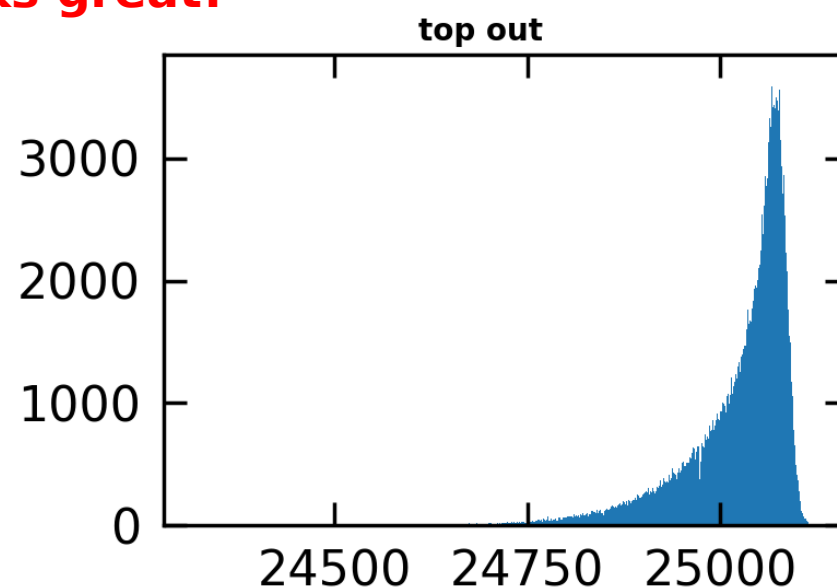
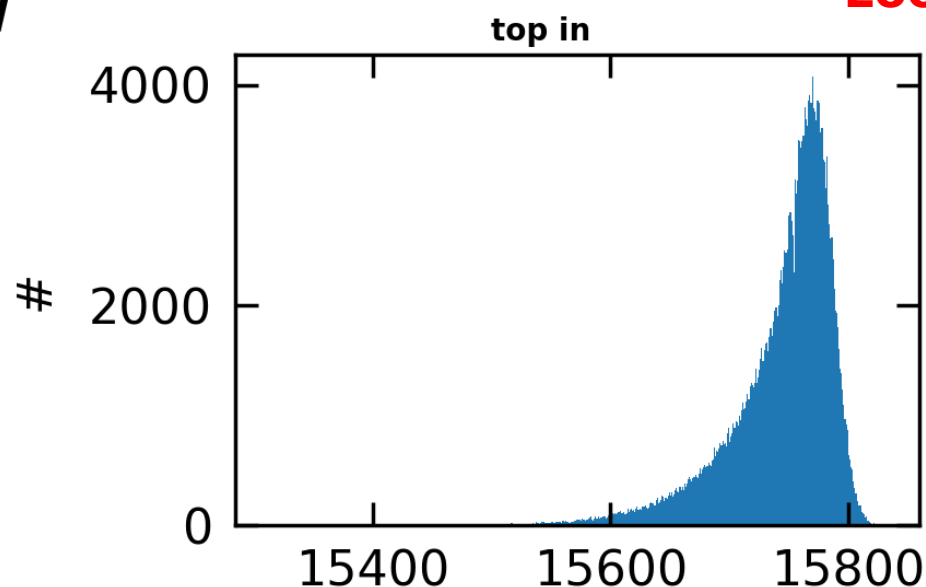
Raw ADC values

RD-0107717
RD-0107717
2023-10-17_18.11.29

Train 1 bunch 1 at 2.55 mA

12W

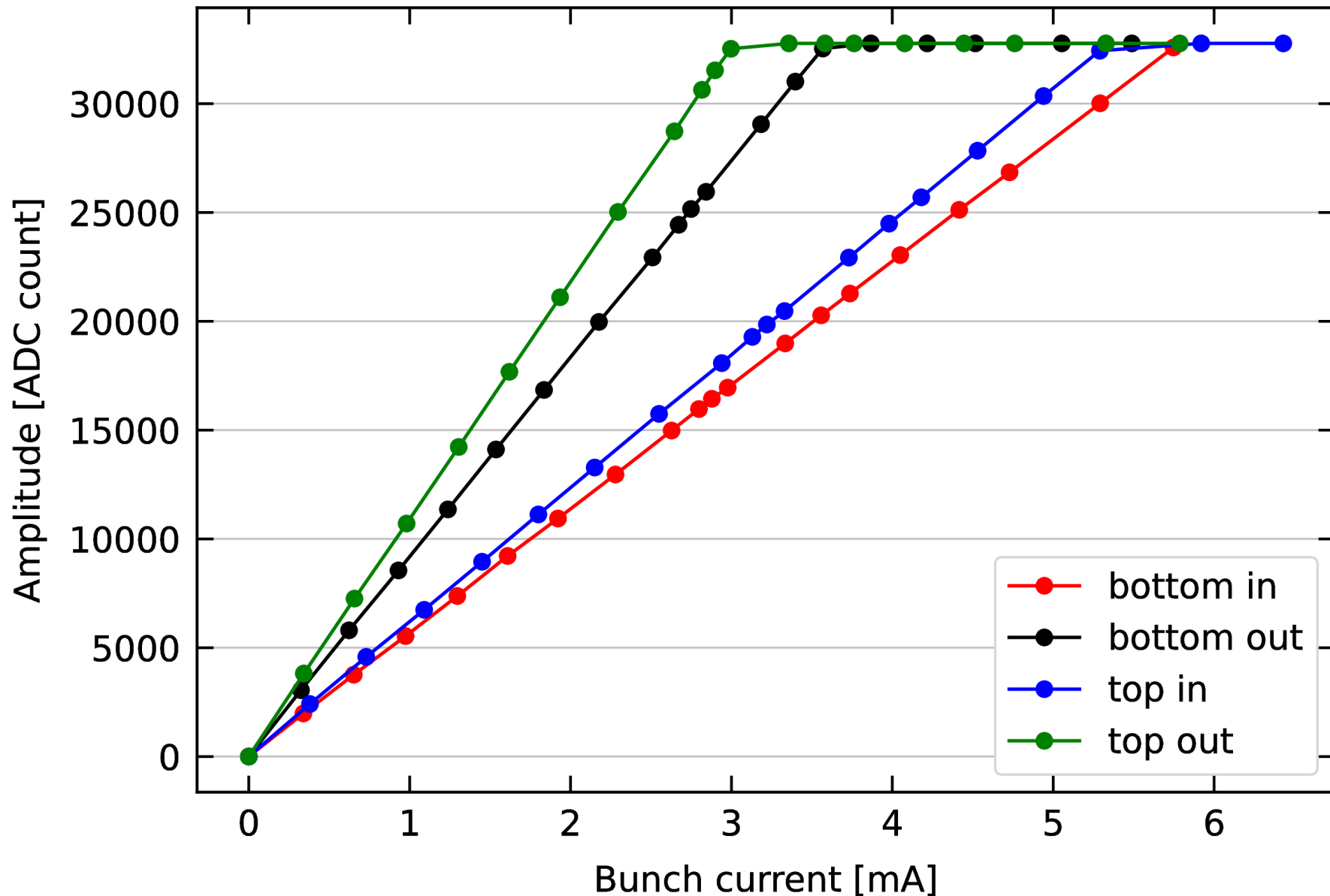
Looks great!



RD-0107724
2023-10-17_18.27.26

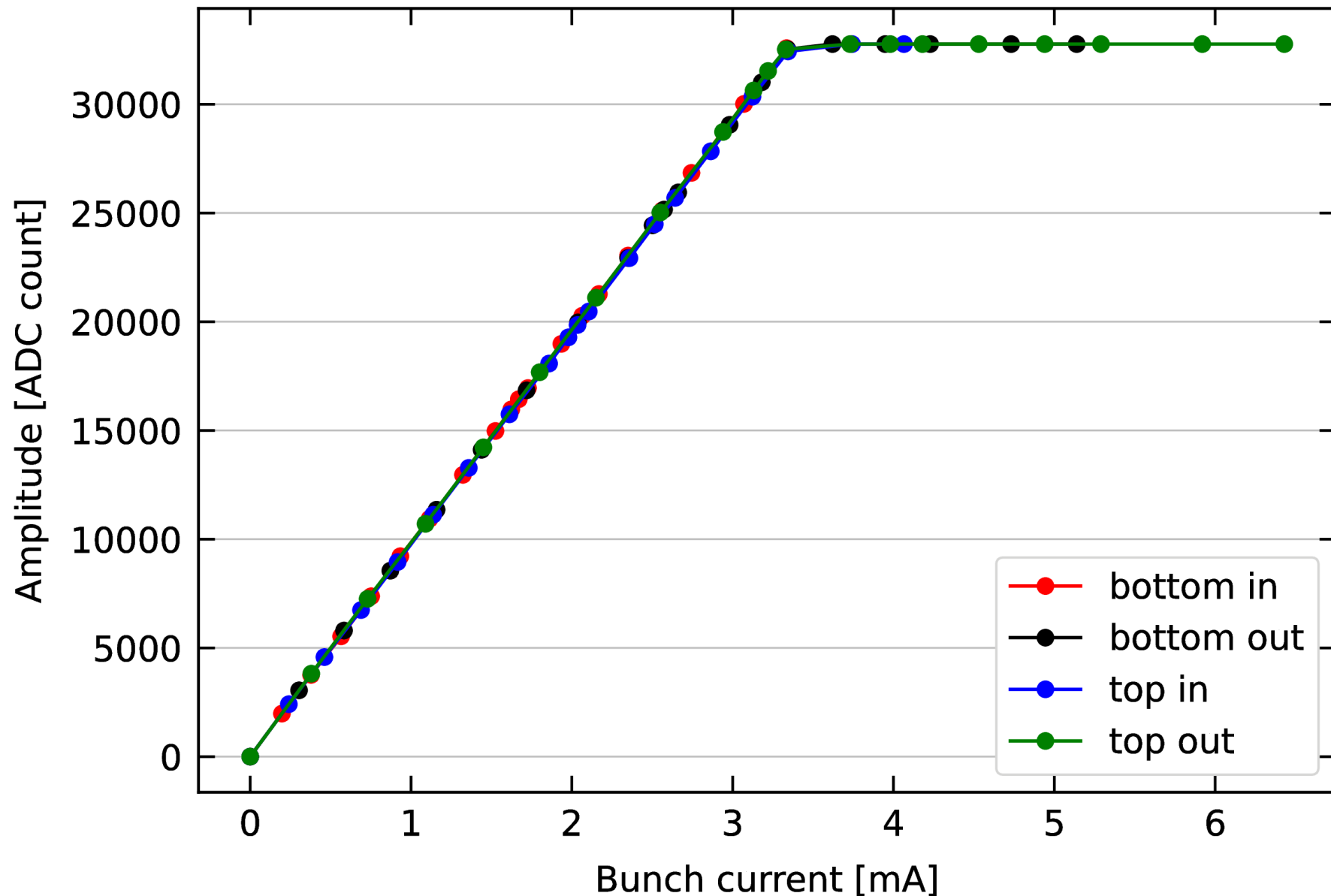
Amplitude vs bunch current

12W (ctactf133), peak-aligned at each current step – Tuesday **10/20**



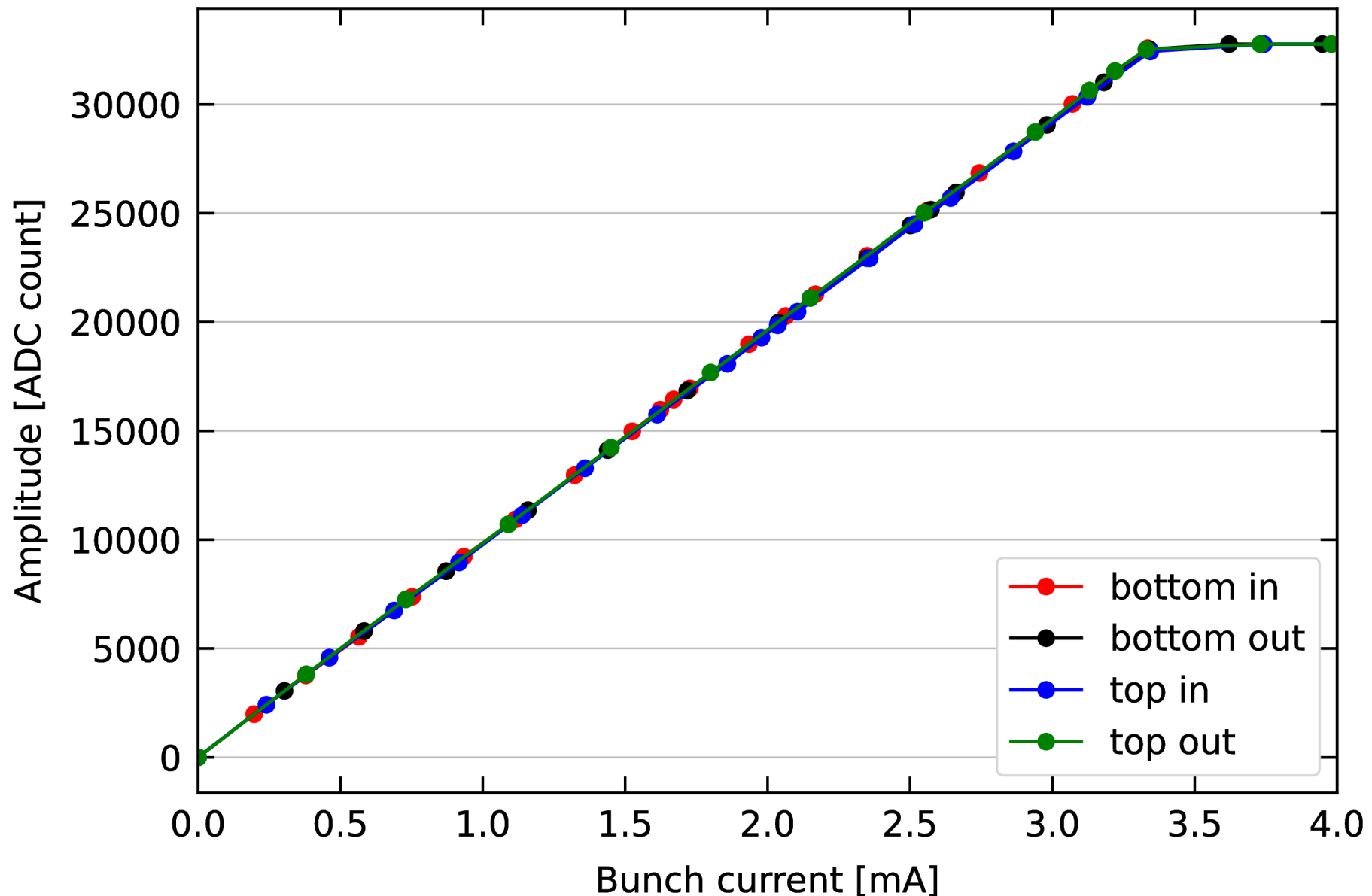
Amplitude vs bunch current

After scaling for the beam position difference at lowest current

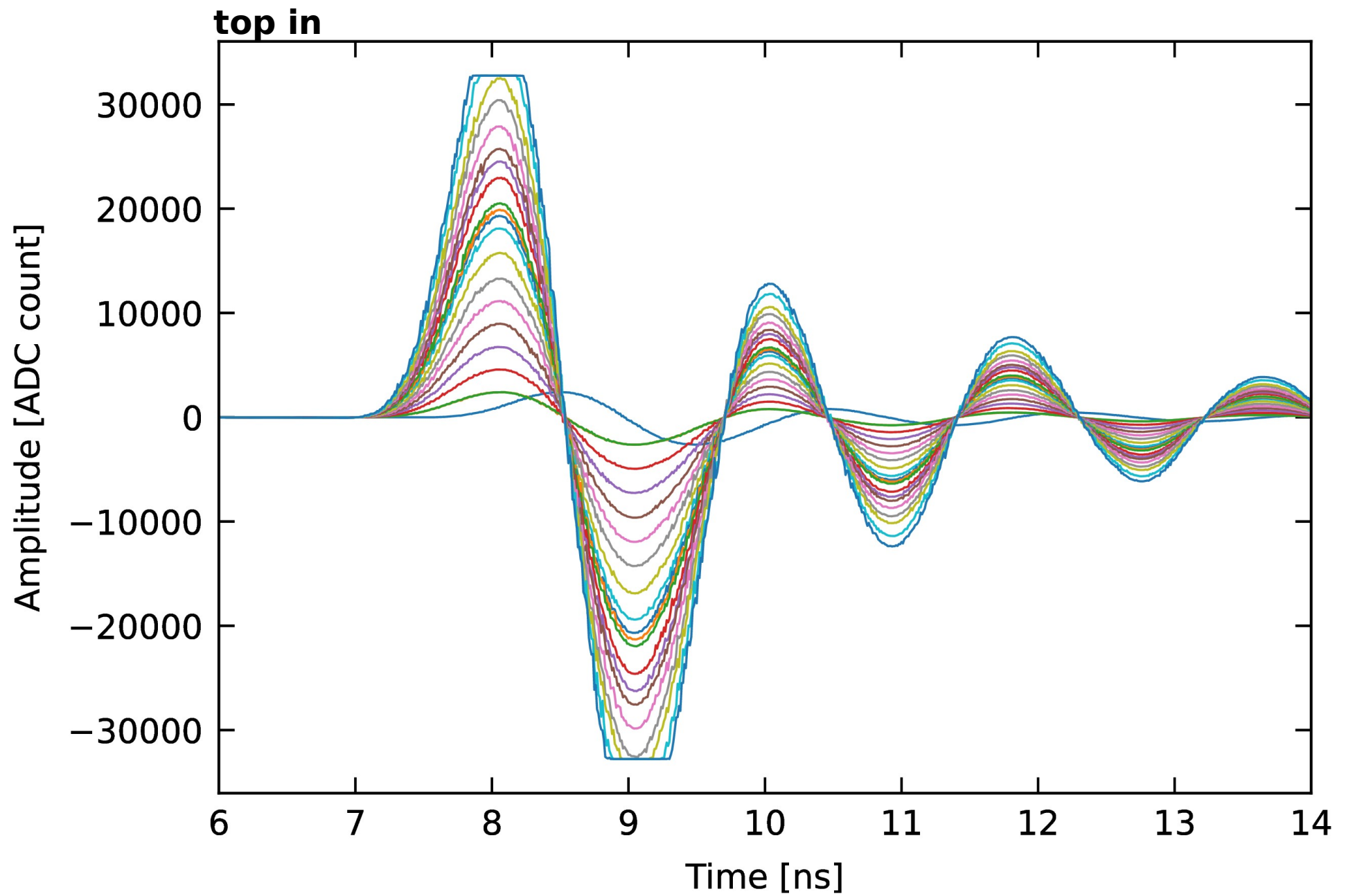


Amplitude vs bunch current

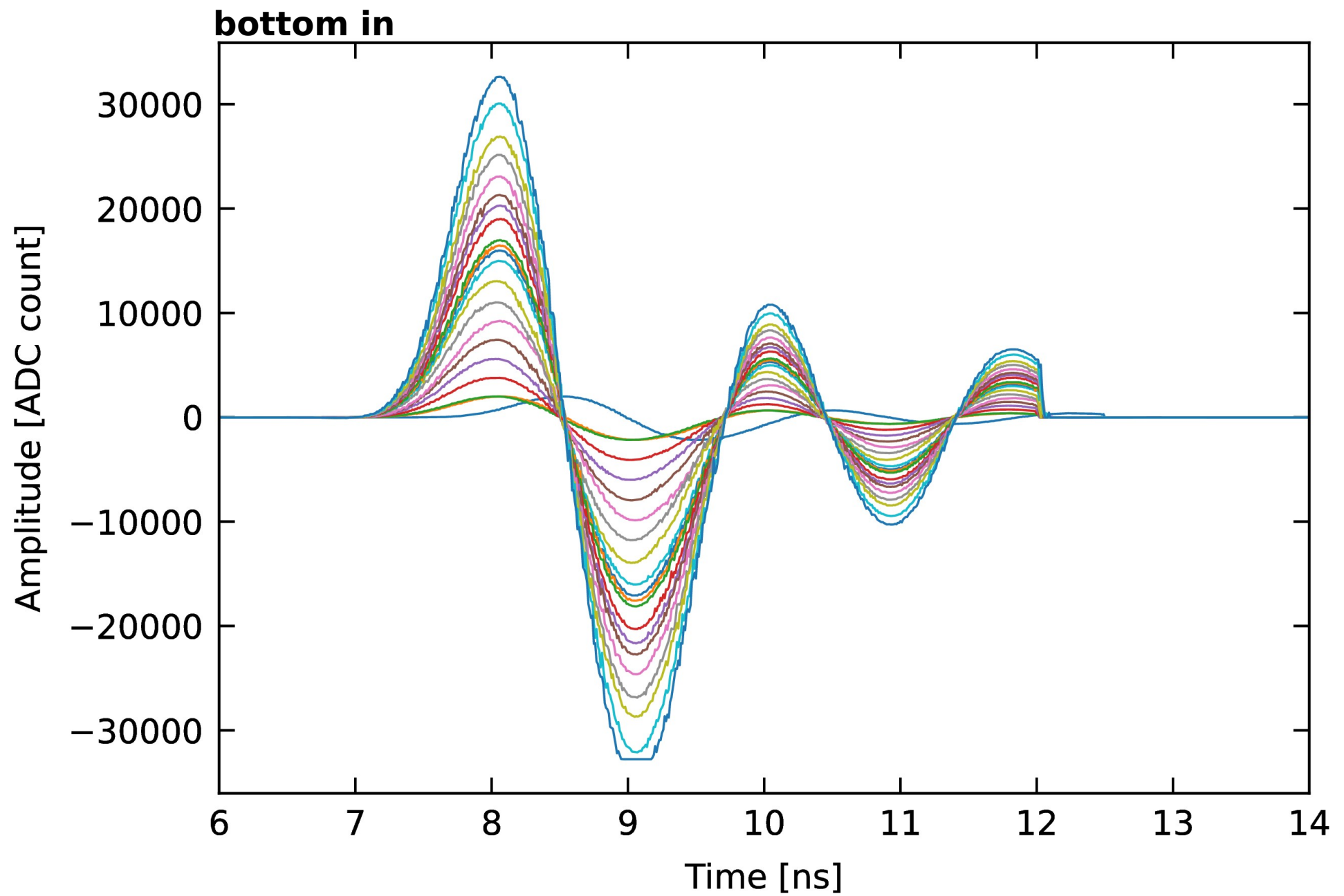
After scaling for the beam position difference at lowest current: zoom [0, 4] mA



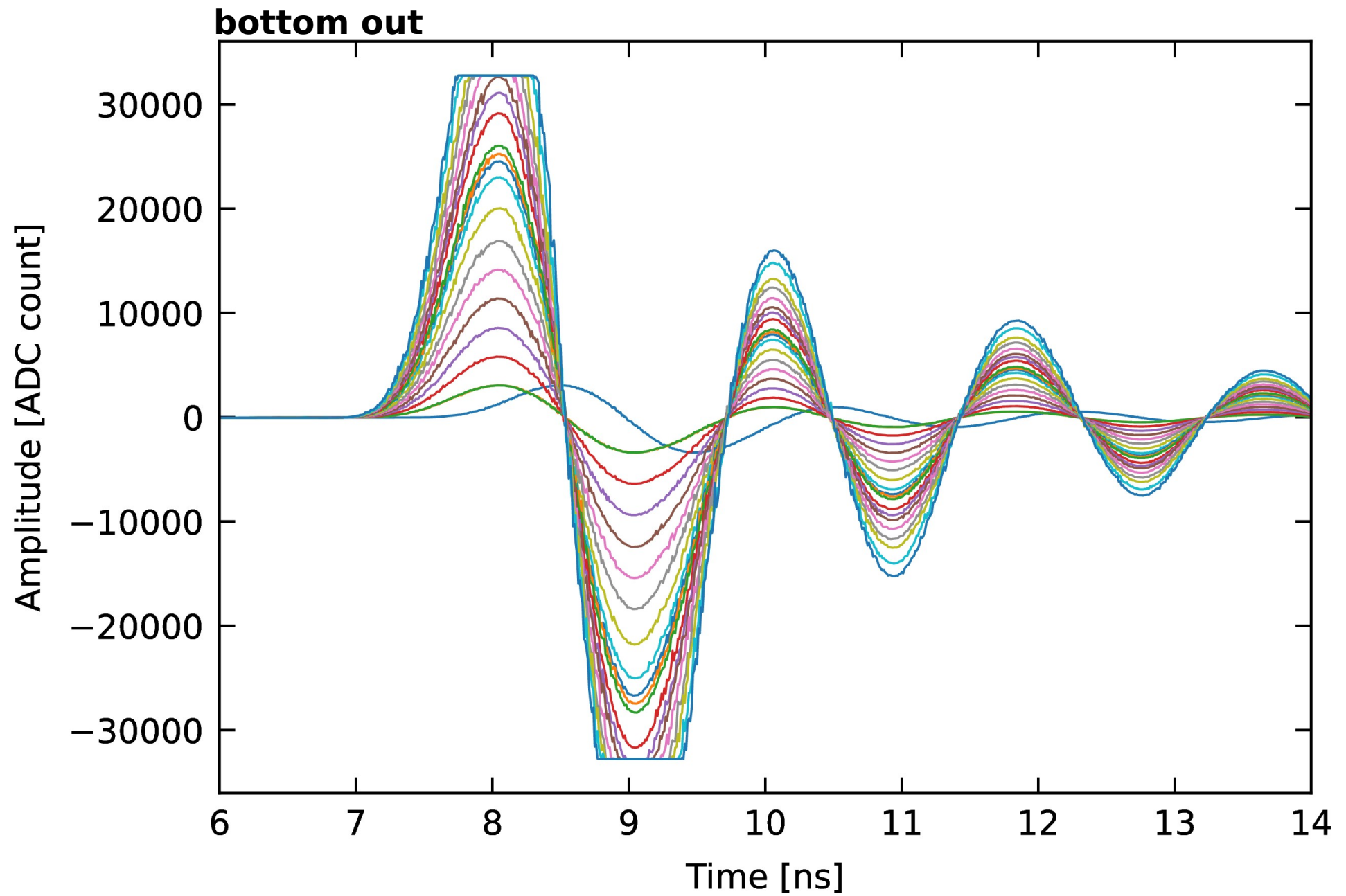
Waveform



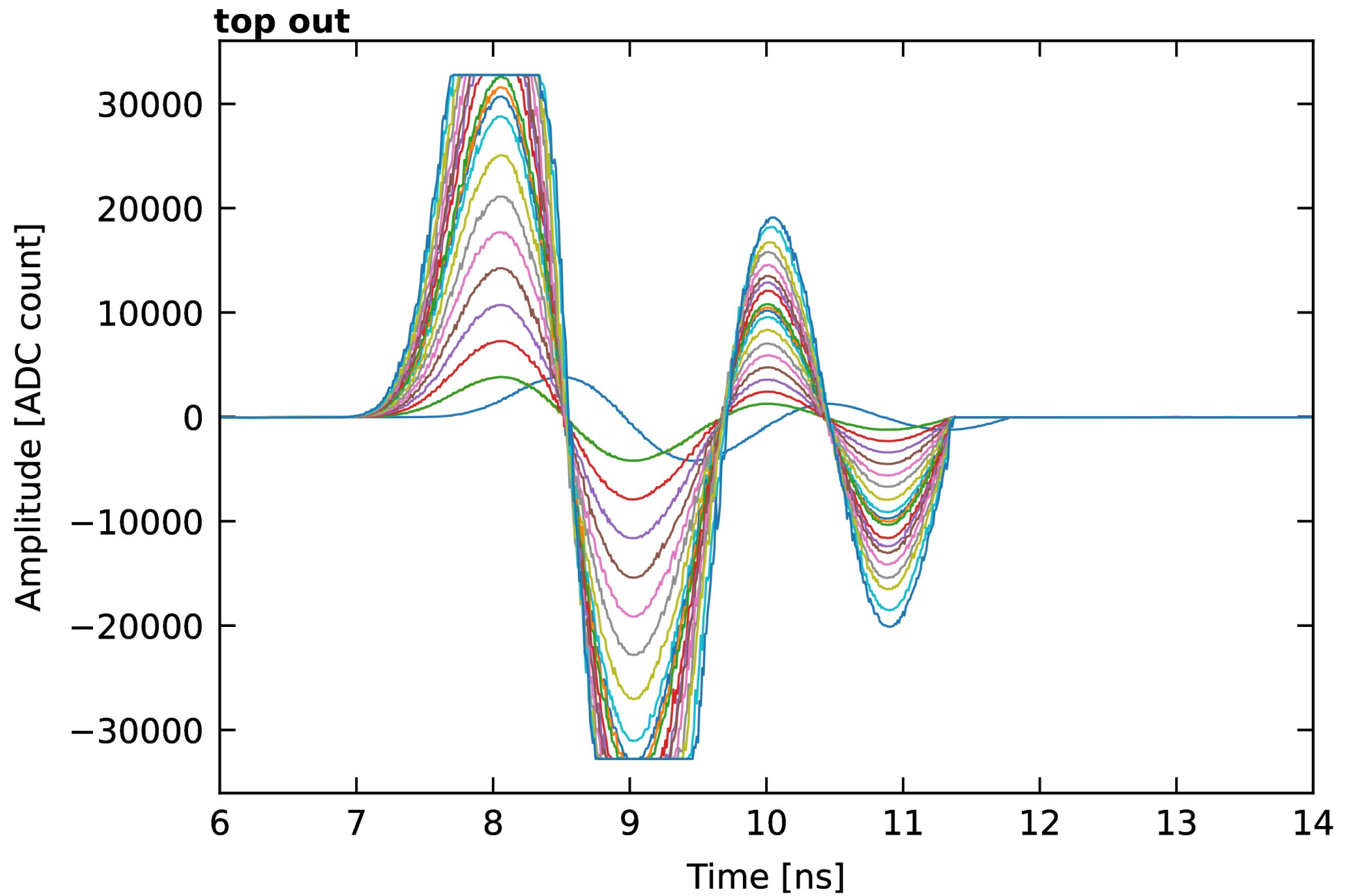
Waveform



Waveform

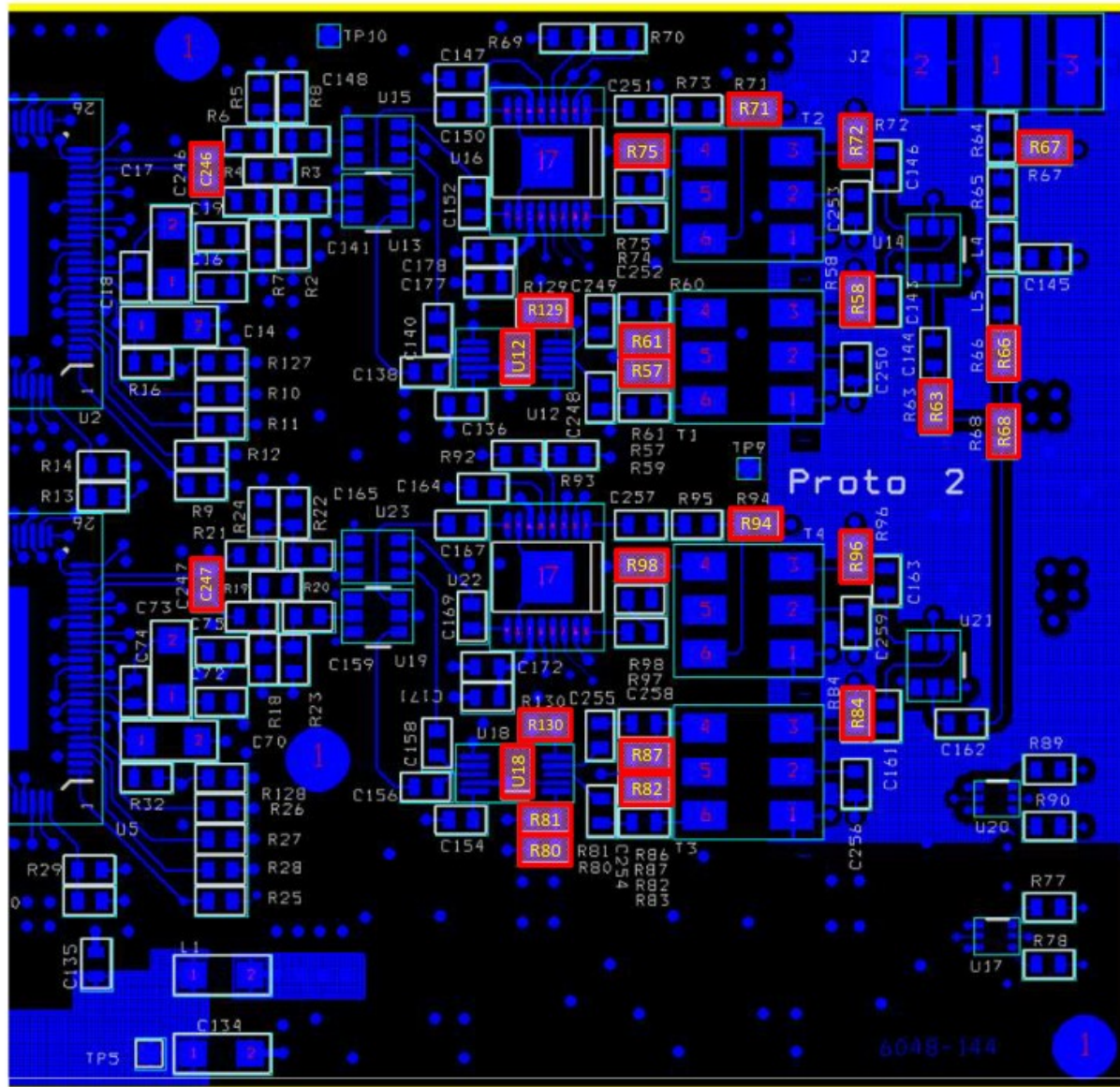


Waveform



Additional materials

REVISIONS FOR AFE 6048-145 – TOP SIDE



R67: REMOVE $49.9\Omega \rightarrow$ DO NOT POPULATE (DNP)

R63,66,68: REMOVE 16.9Ω → PUT IN 0Ω

R58,84: REMOVE 49.9Ω → PUT IN 100Ω

R72,96: REMOVE 49.9Ω → DNP

R71,75,94,98: REMOVE 33Ω → PUT IN 100Ω

R57,61,82,97: REMOVE DNP → PUT IN 2.49KΩ

R80: REMOVE 1KΩ → DNP

R129,130: REMOVE 10Ω → PUT IN 1KΩ

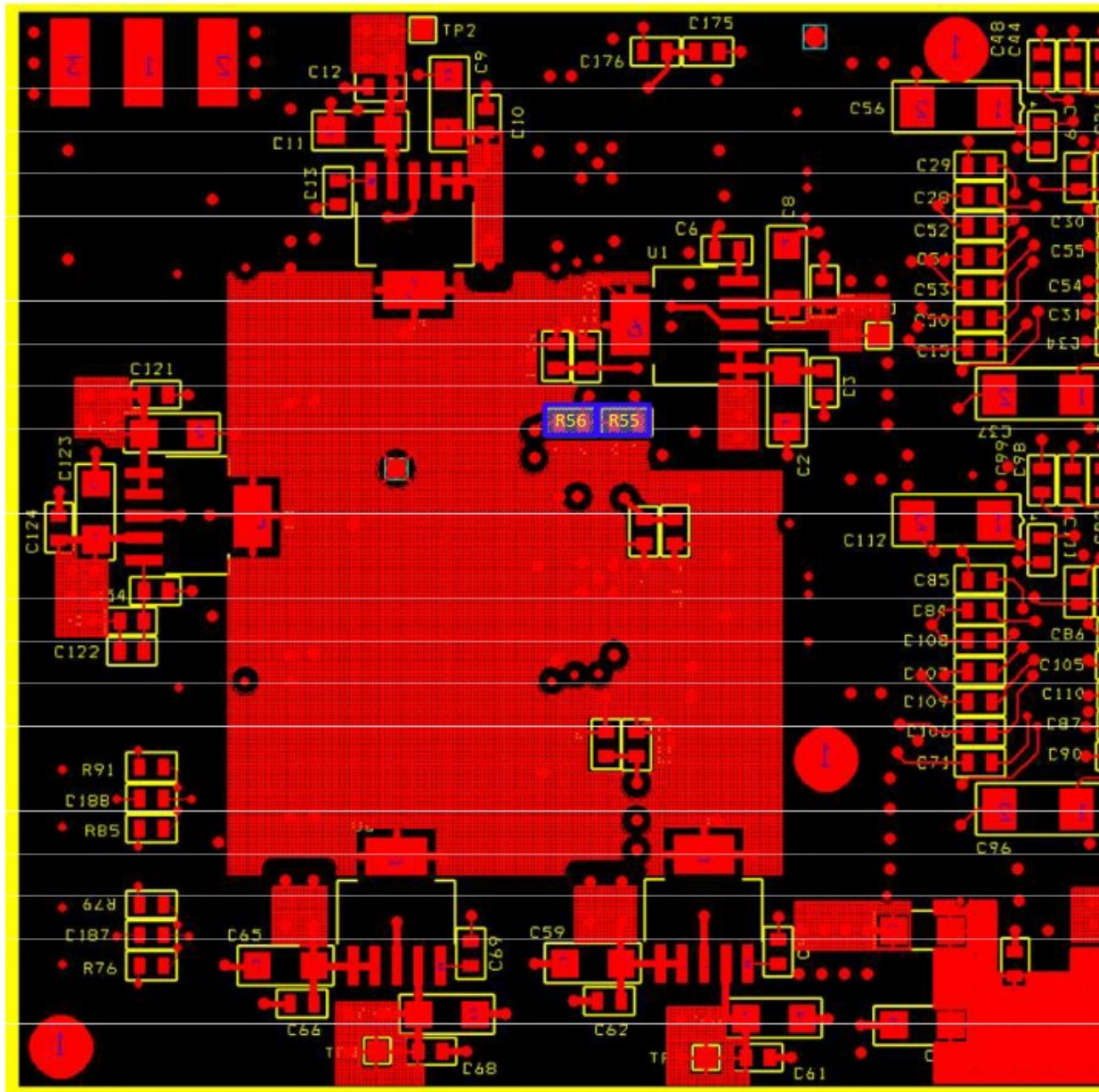
R81: REMOVE DNP → PUT IN 1KΩ

U12, 18: REMOVE AD8351 → PUT IN DIODE PCB ASSY

C246,247: REMOVE 10pF → DNP

Final design

REVISIONS FOR AFE 6048-145 – BOTTOM SIDE



R55: REMOVE 1K Ω \rightarrow DO NOT POPULATE
R56: NOT POPULATE \rightarrow PUT IN 1K Ω