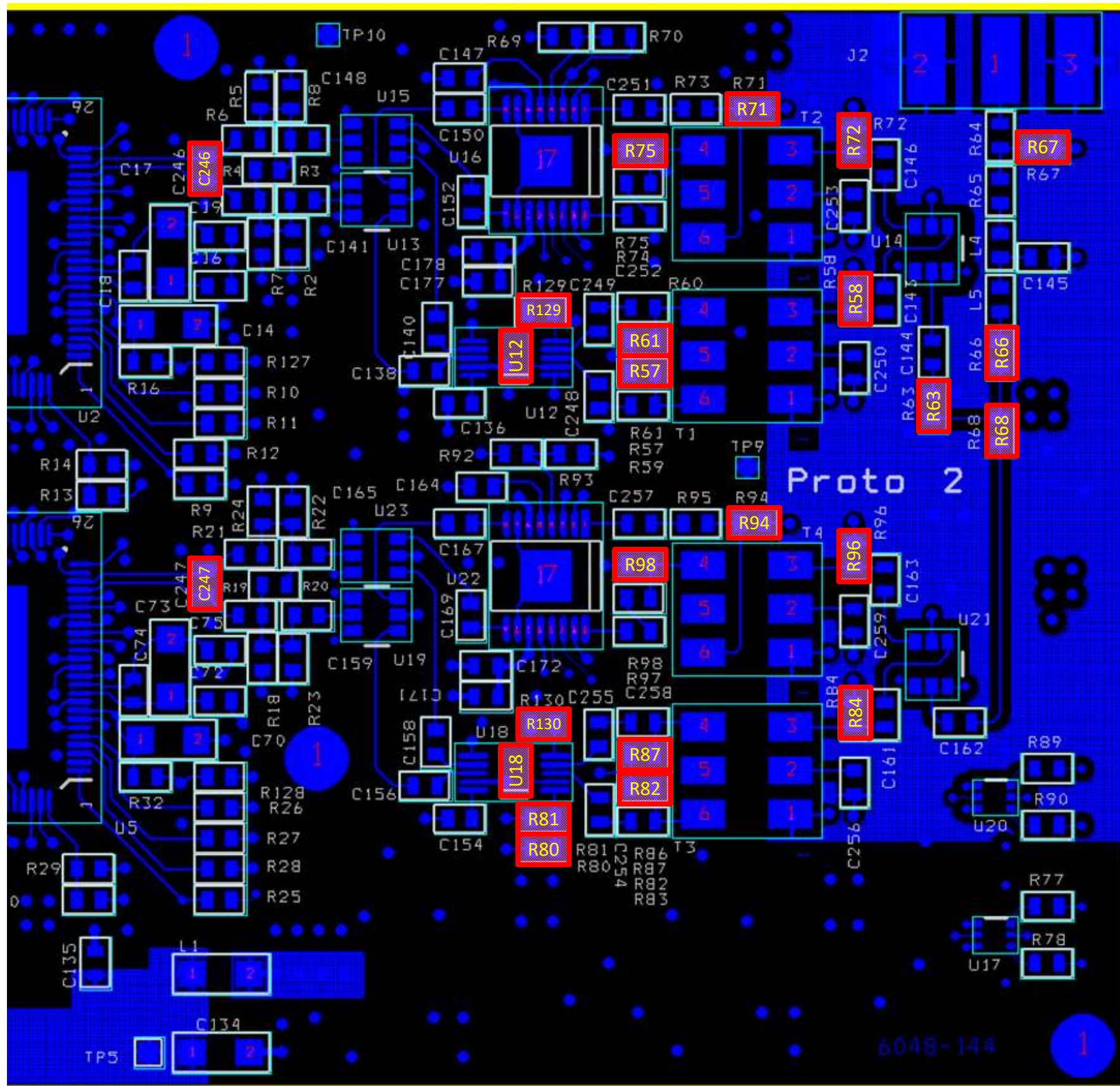


REVISIONS FOR AFE 6048-145 – TOP SIDE



R67: REMOVE 49.9Ω → DO NOT POPULATE (DNP)

R63,66,68: REMOVE 16.9Ω → PUT IN 0Ω

R58,84: REMOVE 49.9Ω → PUT IN 100Ω

R72,96: REMOVE 49.9Ω → DNP

R71,75,94,98: REMOVE 33Ω → PUT IN 100Ω

R57,61,82,97: REMOVE DNP → PUT IN 2.49KΩ

R80: REMOVE 1KΩ → DNP

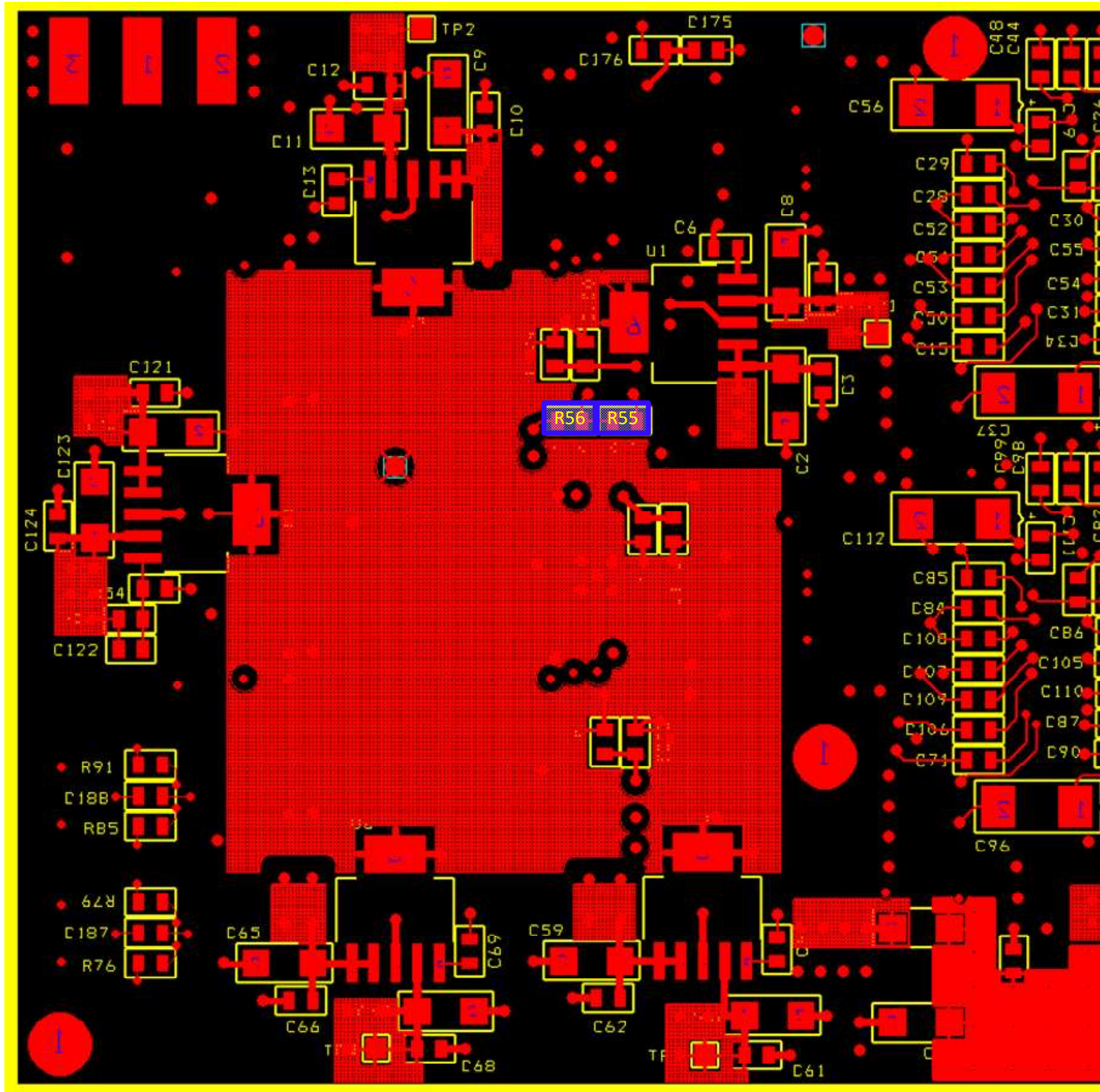
R129,130: REMOVE 10Ω → PUT IN 1KΩ

R81: REMOVE DNP → PUT IN 1KΩ

U12, 18: REMOVE AD8351 → PUT IN DIODE PCB ASSY

C246,247: REMOVE 10pF → DNP

REVISIONS FOR AFE 6048-145 – BOTTOM SIDE



R55: REMOVE 1KΩ → DO NOT POPULATE
R56: NOT POPULATE → PUT IN 1KΩ