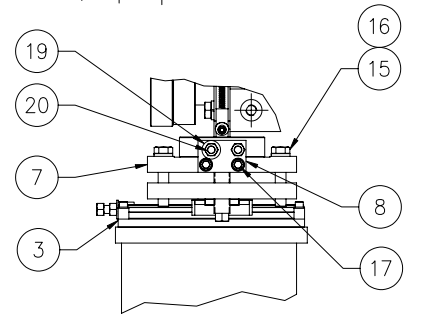
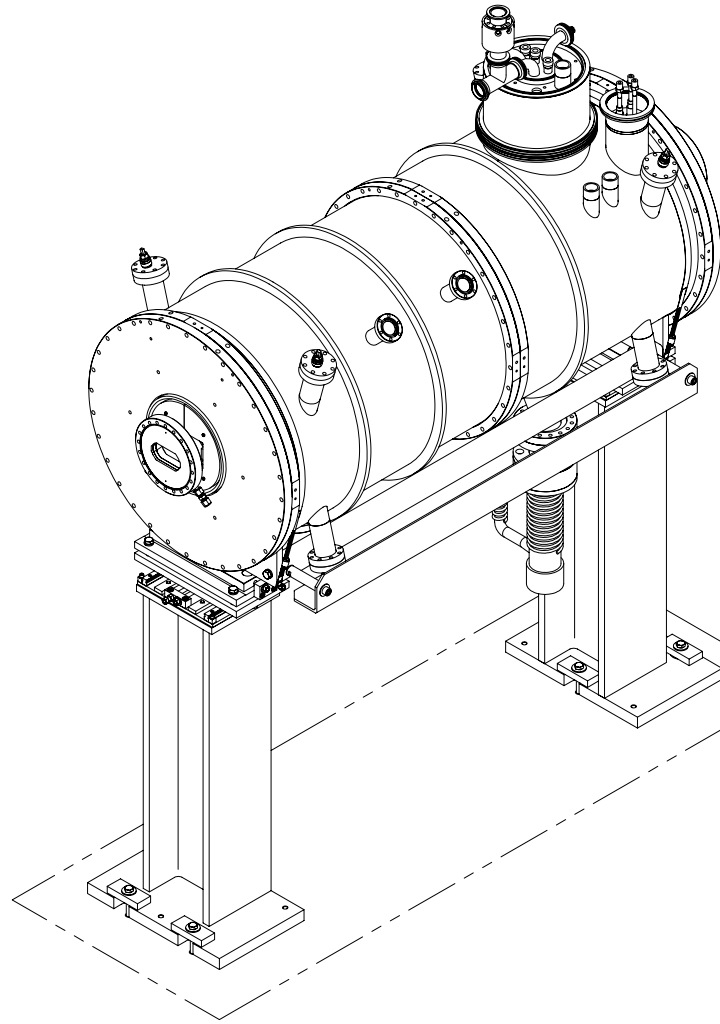
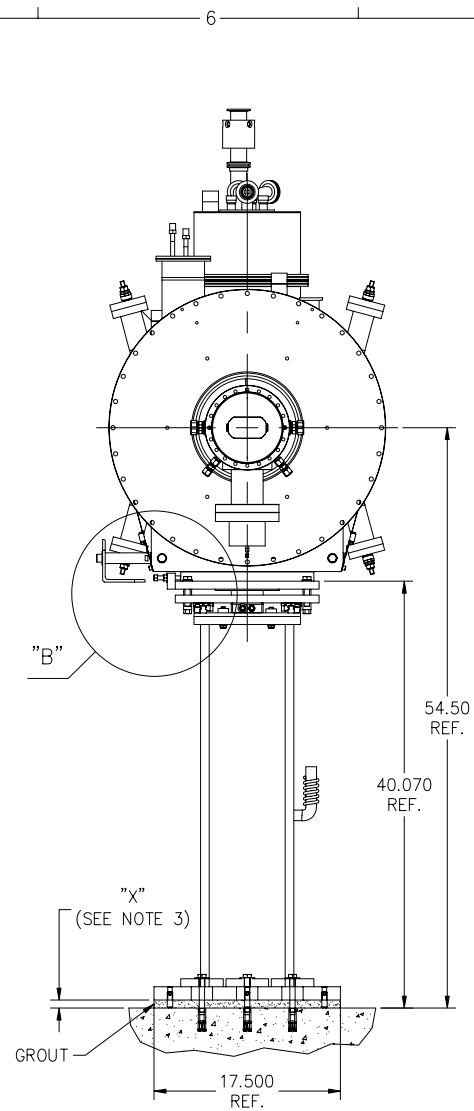
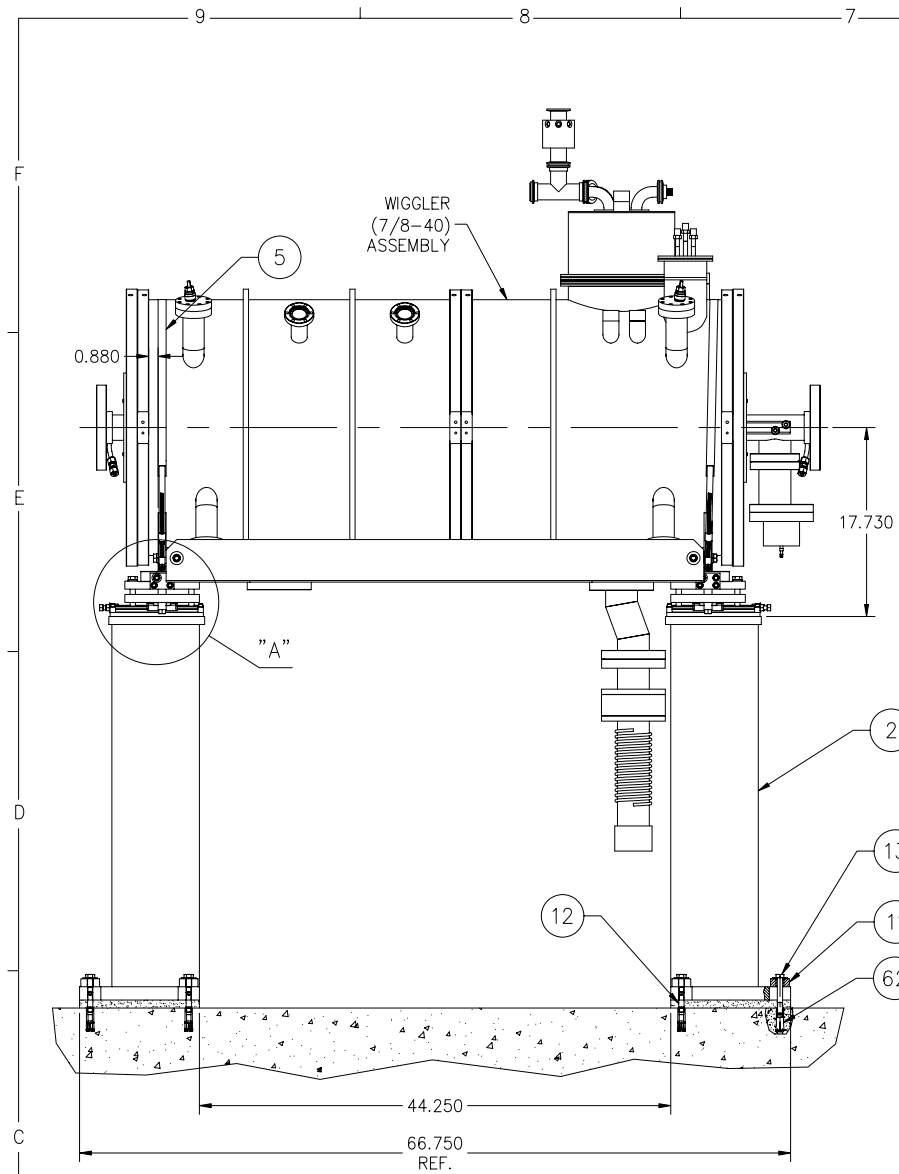
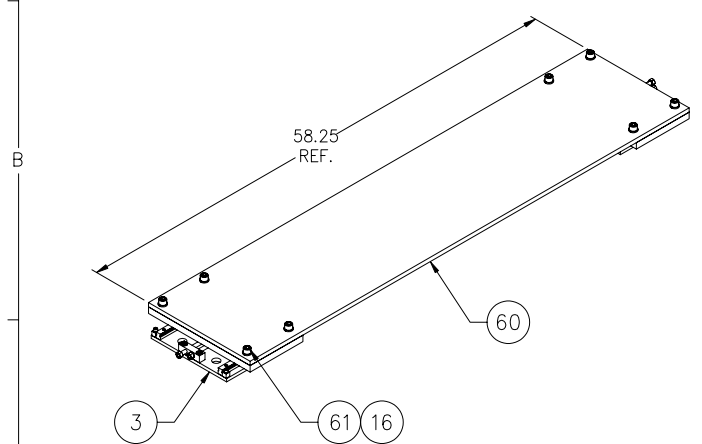


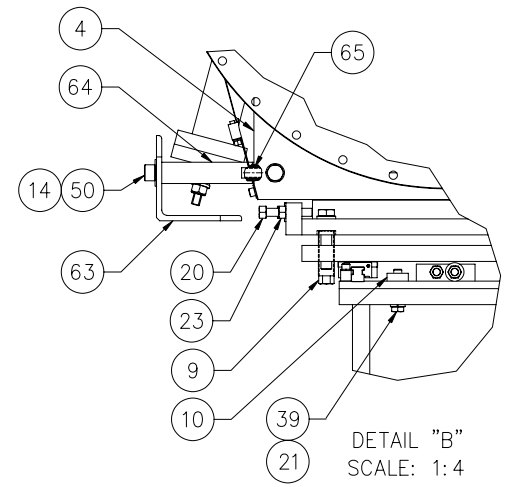
		REVISIONS		
SYM.	ZONE	DESCRIPTION	DATE	APP.
A	-	ADDED: DETAILS "A" AND "B"; ANCHORS ITEM 62; SOME MINOR CHANGES. ADDED: PARTS 63, 64, 65.	02-20-03	VM
B	-	VIEWS UPDATED DUE TO CHANGES IN ITEM 3.	05-12-03	VM



DETAIL "A"  
SCALE: 1:4  
(ANGLE 63 NOT SHOWN)



59 SUPPORT PLATES ALIGNMENT ASSY  
(D-6070-080-01)  
DFT. SCALE: 1:8  
QTY: 1 REQ'D PER ALL



DETAIL "B"  
SCALE: 1:4

1 STAND-2 ASSY

(D-6070-080-01)  
DFT. SCALE: 1:8  
QTY: 1 REQ'D PER WIGGLER  
NOTES: 1. USE SCREWS 12 TO POSITION TOP SURFACES OF SUPPORT LEGS 2 AT HEIGHT OF 36.75 IN. FROM FLOOR. BOTH SURFACES SHOULD BE HORIZONTAL AND IN SAME PLANE.  
2. USE ALIGNMENT ASSY 59 TO POSITION SUPPORT PLATE ASSYS 3 ON TOP OF SUPPORT LEGS 2. ENSURE THAT TOP PLATES ROLL SMOOTHLY ALONG RAILS ON BOTH ENDS AND THEN FIX ASSYS 3 WITH PLATES 10 AND FASTENERS 39 AND 21.  
3. MEASURE GROUT THICKNESS "X" THEN CUT SCREWS ITEM 13 TO DIMENSION L = 2.6 + X.

ITEM	DWG. NO.	DESCRIPTION	Q1	Q2	Q3	REMARKS	REV.
65	D-6070-080-10	THREADED ROD-4	2				
64	D-6070-080-10	ROD	2				
63	D-6070-080-10	ANGLE	1				
62	-	CONCRETE ANCHOR SFDT 1/2-13	6				
61	-	1/2-13 X 1-1/4 SOCKET HEAD CAP SCREW	8				
60	D-6070-080-06	FIXTURE PLATE-2	1				
59	D-6070-080-01	SUPPORT PLATES ALIGNMENT ASSY	X				
50	-	1/2-13 X 1 SOCKET HEAD CAP SCREW	2				
39	-	3/8-24 X 1-3/4 HEX HEAD CAP SCREW	8				
23	-	3/8-24 HEX NUT	2				
21	-	3/8 SPLIT LOCK WASHER	8				
20	D-6070-080-07	SCREW-3	4				
19	-	3/8 BRASS WASHER	2				
17	-	3/8-16 X 3/4 SOCKET HEAD CAP SCREW	4				
16	-	1/2 SPLIT LOCK WASHER	8	8			
15	-	1/2-13 X 2-1/2 HEX HEAD CAP SCREW	8				
14	-	1/2 WASHER	8				
13	-	1/2-13 X 4 HEX HEAD CAP SCREW	6				
12	-	1/2-13 X 1-1/2 CUP POINT SET SCREW	6			MCMASTER-CARR'S P/N 91375A716	
11	D-6070-080-06	CLAMP PLATE	6				
10	D-6070-080-06	FIX PLATE	4				
9	D-6070-080-05	SUPPORT SCREW	4				
8	D-6070-080-06	PUSH-PULL BLOCK-1	2				
7	D-6070-080-05	INTERMEDIATE PLATE	2				
5	D-6070-080-04	FIX STRIP ASSY	2				
4	D-6070-080-04	VESSEL CRADLE ASSY	1				
3	D-6070-080-03	SUPPORT PLATE ASSY	2	2			
2	D-6070-080-02	SUPPORT LEG ASSY	2				
1	D-6070-080-01	STAND-2 ASSY	X				

D	PRINT	PLOT DATE MAY 16, 2003	CORNELL UNIVERSITY LABORATORY FOR ELEMENTARY-PARTICLE PHYSICS F.R. NEWMAN LAB - ITHACA, NY 14853
	DISTR.	CAD FILE NAME D-6070-080-01B	
6070-080	CR-1	UNLESS OTHERWISE SPECIFIED DIMENSIONS ARE IN INCHES	CESR-C, WIGGLER (7/8-40): STAND-2
	REV. 1	TOLERANCES ON: .00 ± .010 .000 ± .005 FRACTIONS ± 1/64 ANGLES ± 0.5° ALL SURFACES	
	REV. 2	CHECKED BY V.MEDJIDZADE	
	REV. B	APPROVED BY V.MEDJIDZADE	
		DRAWN BY V.MEDJIDZADE	DRAWN FOR AMKHALDCHENKO
		DATE 01-15-03	SCALE 1:8
		REV. B	REV. B

FOR MACHINING LUBRICANT USE ONLY  
ALKALINE DETERGENT LUBRICANT CIMSTAR 40  
OR EQUIVALENT APPROVED BY CORNELL LEPP.